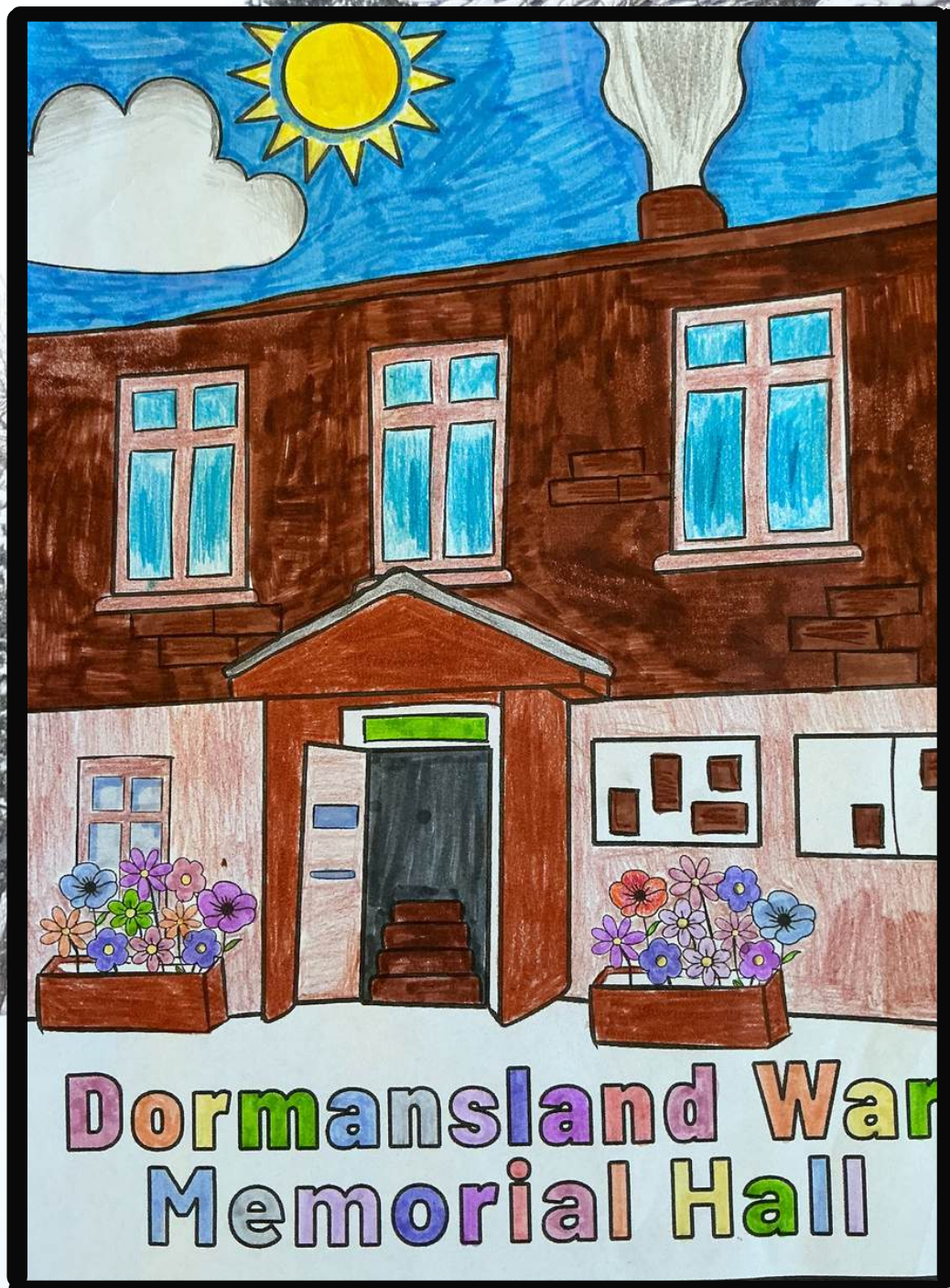


# The Village Voice

Dormansland  
December 2025  
& January 2026



Dormansland War  
Memorial Hall

Congratulations to Mia Brady who won the  
colouring competition at the recent hall open day

St John's church hosts

# Children's Christmas Crafts

Thursday 11th December

3:30–5:00pm

The Centenary Room, St. John's Church  
Places Limited!

Go to [lingfieldparishchurch.org.uk](http://lingfieldparishchurch.org.uk), select  
St Johns and complete the booking form



# From Revd Annie

## Black Friday?

Happy Christmas one and all! I read a sign that made me chuckle this week. It said ' My chocolate Advent calendar says it is only two days until Christmas!' To be fair some of us are counting the days until Christmas; especially those connected to a Christian church in any way. It's a busy .

time of year.

We began Advent on 30<sup>th</sup> November – the season we celebrate as we look forward to Christmas and indeed the time when Jesus will come to earth again – next time bringing the whole of heaven with him.  
(right: Advent 1 - the Hope candle)



And also during Advent I hear we have another Black Friday. When exactly is Black Friday? How many do we have in a year? Black Friday wheels and deals on Christmas presents have been offered from the beginning of November and are even now still flashing up on our screens.

I'd love to say I'm above this kind of crass consumerism and opportunistic marketing. Alas, already this week I've spent £50 on Christmas gifts that might otherwise have been overlooked. Although that's still £188 less than the average British person will shell out during the first week of December, and that will be £500 million more than this time last year.

So what should we make of all of this – the consumerism, and the shiny bright lit up angel figures hanging from street lamps this Christmas, as followers of Jesus?

At one level, we can celebrate businesses offering great deals and balancing the books, getting out of the red after a tough financial year. But the prophet in me wants to remind us that the term 'Black Friday' was first coined in the 1950s in Philadelphia, because it reflected the ugliness of greedy hoards of shoppers buying big at the start of Christmas shopping, and trampling one another to get to the best deals.



All that glitters isn't gold. The sparkling lights and great deals on gifts don't satisfy, and, as I read this week, today's shiny purchases are tomorrow's landfill. Not good news for our fragile ecosystem. And as average debt rises, with many families and pensioners choosing

between heating or eating this Christmas, the consumer frenzy looks as careless and pointless as putting coins into fruit machines.

Perhaps, though, we can redeem this black day season. Could we point our neighbours to the real splendour of the season which our shopping contradicts?

Because now we celebrate Advent, a journey from darkness and unmet longings into the dawning of a new day. *For the true light that illumines all people entered the world* (John 1:9). And the weight of Christ's glory satisfies our soul in a way even the best Black Friday deal can only dimly signpost. Of course you might be waiting for the January sales. The principle is the same. Is shopping the answer to your heart's yearnings? Do you expect healing from other sources than Jesus Christ, the Son of God?

So as you venture out to the shops for your Christmas shopping spree, or to take advantage of the January Sales and appreciate the sparkling stars adorning our streets, take a moment to pray for fellow shoppers. May we all be consumed by the Advent to come and follow the bright lights up to their source...

2 Corinthians 4:6

*For God, who said, "Let light shine out of darkness," made his light shine in our hearts to give us the light of the knowledge of God's glory displayed in the face of Christ.*

I look forward to seeing you all at our Christmas services at St John's – do take some time out from the busy-ness, come and bring the family and join with us in the real reason for the season...

*Revd Annie*

**Note - pull-out Christmas service schedule in the centre of this mag.**



# Christingle Service

at St John's

Sunday 7<sup>th</sup> December, 10am

All welcome!

**TUESDAY 27TH JANUARY**

**3.30-5PM**

**ST JOHN'S CHURCH,**

**DORMANSLAND**

**IN THE CENTENARY ROOM.**

**A SNACK IS PROVIDED.**

**STORIES & ACTIVITIES WITH A BIBLICAL THEME  
FOR CHILDREN AGED 3-11 & THEIR PARENTS/CARERS**

**CHILDREN MUST BE ACCOMPANIED BY AN ADULT**

# Meeting Up Together & Community Hub!



**Centenary Room, St John's**  
**10am-12 noon. All welcome**  
(1st & 3rd Tuesdays )

## Christmas Wreaths for sale



Handmade • Local • Fresh

Beautifully crafted to last the season.  
Made from natural foliage on a  
moss base.

Available from the  
1<sup>st</sup> December

Limited availability

Mrs  
Christmas  
is here to  
help make  
Christmas  
easier

To place an order or pre-order please contact: **Danielle**

✉ [daniellevanvliet1@gmail.com](mailto:daniellevanvliet1@gmail.com) ☎ 07495502318

Come and view at 106 West Street, Dormansland, Surrey, RH7 6QT  
from 1<sup>st</sup> December

# Lingfield Marathon Minibus Shopping Trips.

Upcoming shopping trips are:

## December

- Friday 5th. Sainsburys, East Grinstead
- Friday 12th. Morrisons, Oxted.
- Friday 19th. Tesco, 3 Bridges.

## January

- Friday 2nd. Crawley town centre & M&S Foodhall at Acorn Retail Park.
- Friday 9th. Sainsburys, East Grinstead
- Friday 16th. Morrisons, Oxted.
- Friday 23rd. Tesco, 3 Bridges.
- Friday 30th. Crawley town centre & M&S Foodhall at Acorn Retail Park.



Suggested donation per trip is £3. Call Scott on 07710 269369 to book your place.

On Friday 7th November 2025, 14 teams gathered in the Victoria Club, Lingfield for the **annual quiz night** to raise funds for the Lingfield Marathon Community Mini Bus. My thanks to every team for supporting this community asset, it is important as the mini bus is used 2 - 3 times every week transporting various groups. I also want to thank Kellie at the Victoria Club and her staff for looking after everyone and their generous donations to our raffle.

Other raffle prizes were donated by local businesses and our thanks to them all:

Lingfield Park Racecourse, Lingfield Park Golf Club, Tarana Restaurant, The Star Pub, King Henry VIII Pub in Hever, Edenbridge, Bonce Hair & Beauty in Lingfield, Joyce's with Best Wishes and Lingfield Post Office.

Everyone's support helped the quiz raise £740. This goes towards keeping the mini bus on the road - annual service, MOT, insurance, repairs and building a fund towards a new mini bus.

Thanks again !For more information on our mini bus please visit our website - Lingfield Marathon Mini Bus.

*Scott McDonald*

# Neighbourhood Watch Update



Latest available reported crime between 7<sup>th</sup> October and 5<sup>th</sup> November 2025. Please remember these statistics are only as good as the information received so please report any crimes to ensure both an accurate reflection but also greater support from Surrey Policing for our village.

One crime has been advised via the Tandridge Neighbourhood Watch Newsletter for Dormansland during this 4 week period.

## **Attempted Robbery**

Blackberry Lane, Dormans. Around 14.55 a male was walking along the footpath from Dormans Park towards Dormans Station when he was accosted by four males who threatened him and told him to give them money or they would stab him in the neck. The victim carried on walking into the station and the suspect group then boarded the train towards Oxted. They left the train at Hurst Green . Two suspects were described as teenagers, white; over 6 feet tall and wearing all black clothes. One had a parka with hood up and a facemask and the second had a white lining in the hood. The third had a short ginger hair and blue jeans.

Please join the Neighbourhood Watch community as additional information is shared, providing guidance on how to secure your property, scams etc, which are all very useful.

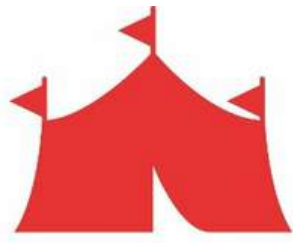
*Clive Robinson.*

One of your Neighbourhood Watch Co-ordinators

**Christmas Tree Lighting**  
**with Carols & festive refreshments** \*

**Friday 12<sup>th</sup> December, 6pm**  
**St John's churchyard**





# Dormansland Carnival

C I R C A 1 9 5 3

## Carnival 2026

After a last ditch attempt to secure a team leader last month we have had no joy at the time of submitting this update, 19th November. Although one person did contact us, they have not yet responded to our emails. To clarify, we have a number of volunteers happy to form an organising team but no one to take on the leadership role.

It is not viable to undertake all of the work required for a successful event without someone overseeing/co-ordinating the team responsible for the various strands that make the carnival what it is.

So at this time and with a heavy heart, I have to announce that we **cannot run the Carnival for 2026** but I hope we will secure someone so the event can continue in 2027.

If I have any changes in the very near future, I will share via FB & Insta. Thanks for reading,

*Clive Robinson*  
Carnival Treasurer



## Carols by Candlelight

Sunday 21st December, 6.30pm  
St John's church

# Dormansland Baptist Church Community Hub

Fridays  
10-2pm



*Tea, coffee, cake  
and light lunches  
available.*

*Offering a calm and warm environment for you to come sit,  
work, read, relax or knit etc.*

## Lingfield & Dormansland Community Centre



### MIDWEEK MINGLE

*Brighten up the winter afternoons by joining us at the community centre for tea, scones, and good company in a warm, welcoming space. With free Wi-Fi, friendly faces, and plenty of chatter, everyone is welcome!*

**Wednesday afternoons, 2.00pm – 4.00pm**



### OPERA GALA NIGHT

*We are delighted to welcome back the enchanting soprano Callie Gaston and her guests performing a new programme for 2026.*

**Saturday 07 February, 7.30pm**

Tickets £16.00 / Licensed bar

Tickets available online: <https://www.lingfieldcentre.org/event-list>  
or from the centre office: 01883833893 [enquiries@lingfieldcentre.org](mailto:enquiries@lingfieldcentre.org)

# CHRISTMAS FAIR

SATURDAY 6<sup>TH</sup> DECEMBER



10-10.30AM  
SEN SESSION

SPECIAL GUEST  
VISIT FROM  
THE  
GRINCH!

10.30-12.30PM  
GENERAL  
ADMISSION

FESTIVE FUN, GAMES, PRIZES  
AND MORE!



Let's  
**EXPLORE!**  
PLAY CAFE

**Saturday 6<sup>th</sup> December**

**10.00am to 12.00pm**

Dormansland Baptist Church

**Free SEND  
stay and play café.**

**Everyone welcome**



# Dormansland Parish Council



The winter is the time for the Parish Council to set the budget for the financial year 2026/27. One of the issues facing the Council is how much to contribute to the playground refurbishment. A small working party has been seeking to raise funds with mixed success and Tandridge Council have earmarked over £100,000 towards the project. We expect the refurbishment to start in 2026.

You will probably have heard that from April 2027, there will be just one Unitary Authority administering services in East Surrey rather than the two tier system of Tandridge District Council and Surrey County Council that we have now. As part of integrating into the East Surrey Authority and rationalising resources, Tandridge District Council is inviting Parish Councils to take ownership of public spaces and facilities such as the playground and the public toilets. Dormansland Parish Council is investigating this option very closely, but have not yet made a decision. If the Parish Council takes the option not to take ownership of these facilities, it is expected that East Surrey Council will take them on and maintain them.

There is currently a vacancy for a Parish Councillor and if you are interested in joining the Parish Council and having a say in topics such as these, please contact the Parish Clerk to express your interest. Any work that a Parish Councillor undertakes is on a voluntary basis.

On Remembrance Sunday, a wreath was laid at the War Memorial, on behalf of the Parish Council, in honour of the service personnel from Dormansland, killed in action.

The working party that is developing the Neighbourhood Plan is reviewing the responses received, as part of the public consultation. Where appropriate, these will be incorporated into the revised plan. In due course, there will be a referendum when every member of the electorate will be invited to vote on whether or not to accept the plan.

The referendum including the timing of it will be arranged by Tandridge District Council.

We will be holding Parish Council Meetings in both December and January this winter and we would be delighted to see members of the public attending and taking an interest in the administration of village life.

The Parish Council wishes everyone a peaceful Christmas and a joyous New Year.

The next Parish Council Meetings will be at **6.30pm on Wednesday 3<sup>rd</sup> December 2025** and **Wednesday 7<sup>th</sup> January 2026**. Planning Meetings begin 30 minutes earlier at 6pm. The meetings are held at the Baptist Church Meeting Room.

Contact us at [parishclerk@dormansland.org.uk](mailto:parishclerk@dormansland.org.uk) or telephone 07395 323456 and leave a message. The postal address is PO Box 335, Lingfield, RH7 9BP.

*Steven Rees, Clerk*

Web. [www.dormansland.org.uk](http://www.dormansland.org.uk)



Our next talk will be held on 12<sup>th</sup> January in the Jennings Hall (behind the Lingfield and Dormansland Community Centre). The talk will be on "Netherne", the former Surrey County Psychiatric Hospital in Redhill that applied Art Therapy among others treatments, and will be given by Julian Pooley, the manager of the Surrey History Centre in Woking. Doors open at 7:30pm for an 8pm start. There is a charge of £2.50 for visitors to our meetings.

Please note that on our website, [www.rh7.org](http://www.rh7.org), there are details of our events through the year and 135 factsheets on local history available for you to read for free. If you have any queries on local history, then contact our chairman ([rh7histsoc@gmail.com](mailto:rh7histsoc@gmail.com)) and one of our team will arrange to meet you at the library.

*Bill Stevenson.*

[www.rh7.org](http://www.rh7.org)

# Remembering a dear Neighbour, Pat Carnes

How I miss Pat, who passed away recently at the age of 97. I loved the stimulating conversations we had together.

Pat and Peter arrived in The Platt in the early '70s, a year or so before me. She was a teacher at South Godstone for many years, always busy, so I didn't see much of her. Much of their life centred around St John's Church. When she and her husband Peter retired, they enjoyed quite a bit of travelling.

As Peter declined, she cared for him devotedly, and when he needed nursing care, she visited him very regularly in Greathed Manor over the course of several years, including those awful covid times, when she was unable to visit for a while, then when regulations relaxed a little, she had to garb herself in plastic apron and mask for very restricted visits, which was so bewildering for poor Peter.

To the end Pat was lively, quietly humorous and with an enquiring mind. Until recently she read The Telegraph daily and worked her way through the puzzles page which went way over my head! She was reserved and independent, but always enjoyed talking about world events, literature, sports, garden plants and lots more.

She was a prolific reader of many genres, particularly hard-hitting detective fiction and thrillers, but also the classics, and in her last year spent at Tandridge Heights she was regularly supplied with books from Len Millham's bookshelf in the High Street: such a marvellous facility.

She always wanted to hear news of people and events around the village, and loved reminiscing about friends and neighbours from the past.

Remembered with much love,  
*Anne van Vliet*



# Dormans Evening WI “DEWI”

Founded 1964

[www.dewi.chessck.co.uk](http://www.dewi.chessck.co.uk)

 DormansEveningWI

theWI  
INSPIRING WOMEN

*It's beginning to feel a lot like Christmas!*

WI members are looking forward to spending time together over the festive season with a celebration meal at a local hostelry followed shortly after by a Christmas party with musical entertainment where there is sure to be a wonderful spread of good food.

The next monthly meeting will be on **Thursday 8<sup>th</sup> January at 7:30pm** in The Parish Room, when there will be a games and social evening.

On 12<sup>th</sup> February, the renowned author Gill Thompson will be speaking on the subject of Child Migration to Australia, as characterised in her best-selling novel “The Oceans Between Us”.

Meetings are held on the second Thursday of the month at 7:30pm in the Parish Room. A number of other activities are held throughout the month, such as theatre trips, games nights, book clubs and walks.

Any woman over eighteen is eligible to join WI and there is no charge to visitors. Please come and sample the friendship of WI. You will be assured a warm welcome.

*Anne van Vliet*

07941 135012



**Sundays 14th December & 11<sup>th</sup> January**

During the 10am service at St John's. We look forward to seeing you!

# THE OLD HOUSE AT HOME

---

JOIN US EVERY WEDNESDAY AT 20:00 FOR OUR PUB QUIZ - £2.00 ENTRY

---

## WHAT'S ON IN DECEMBER

**Thu 4th &  
Sun 7th**

CHRISTMAS WREATH MAKING WORKSHOP - 6PM. CREATE YOUR OWN BEAUTIFUL FESTIVE WREATH. £45PP INCLUDING A GLASS OF BUBBLES TO HELP GET YOU IN THE FESTIVE SPIRIT!

**Tue 9th**

CHRISTMAS MARKET. 5 - 9PM. SUPPORT LOCAL BUSINESSES, BROWSE THE FESTIVE STALLS, ENJOY A MULLED WINE AND SOAK UP THE HOLIDAY SPIRIT!

**Sat 13th**

BREAKFAST WITH SANTA. 10AM - 12PM. ENJOY A FESTIVE MORNING WITH A SPECIAL APPEARANCE FROM SANTA AND PRESENTS FOR ALL OF THE CHILDREN! PRE BOOKING ONLY.

**Fri 19th**

LIVE MUSIC FROM SKIFFLE BAND REVIVAL. FROM 8.30PM. JOIN US FOR FESTIVE CHEER & GOOD TIMES!

**Sun 28th**

CHRISTMAS BINGO & MEAT RAFFLE! BINGO FROM 3PM £1 PER GAME. MEAT RAFFLE TO FOLLOW AFTER THE BINGO, £2 PER TICKET. A FUN FILLED AFTERNOON TO BE HAD BY ALL!

**Wed 31st**

NEW YEARS EVE PARTY WITH LIVE MUSIC FROM HARRY SPADGE FROM 21:00. FREE ENTRY. £10PP DEPOSIT TO BOOK A TABLE - INCLUDES A NIBBLING PLATTER.

## FESTIVE OPENING HOURS

Mon 22<sup>nd</sup> & Tue 23<sup>rd</sup> 12:00 - 22:00 | Wed 24<sup>th</sup> 12:00 - 22:00 | Thu 25<sup>th</sup> 12:00 - 15:00 |  
Fri 26<sup>th</sup> 12:00 - 18:00 | Sat 27<sup>th</sup> 12:00 - 00:00 | Sun 28<sup>th</sup> 12:00 - 22:30 | Mon 29<sup>th</sup>  
12:00 - 22:00 | Tue 30<sup>th</sup> 12:00 - 22:00 | Wed 31<sup>st</sup> 12:00 - 01:00 | Thu 1<sup>st</sup> 16:00 - 22:30

---

## WHAT'S ON IN JANUARY

**Fri 16th**

LIVE MUSIC FROM BANJO BILL & FRIENDS. FROM APPROX 8:30PM!

**Sun 25th**

MONTHLY MEAT RAFFLE. 4PM. £2 PER TICKET, MANY PRIZES TO BE WON.

**Wed 28th**

CHARITY QUIZ NIGHT. 8PM. £2 ENTRY. MAXIMUM OF 6 PER TEAM. PRIZES IN THE FORM OF DRINKS TO BE WON. WINNING TEAM CHOOSE WHAT CHARITY THE WINNING POT IS DONATED TO!

**Sat 31st**

LIVE MUSIC FROM ACOUSTICA. FROM APPROX 8:30PM.

01342836828 | [oldhousedormansland@gmail.com](mailto:oldhousedormansland@gmail.com)

# CHARTHAM

## FINANCIAL PLANNING

A wealth of expertise on your doorstep

We provide an experienced wealth management and financial planning service offering specialist independent advice in a wide range of areas including:

Investment Planning

Retirement Planning

Inheritance Tax Planning

At Chartham Financial Planning, our client's best interest is at the heart of everything we do. We work with you to build a secure and prosperous future.

Mike Walker DipPFS, Cert CII (MP&ER)

Tel: 01342 891129

Email: [mike@charthamfp.co.uk](mailto:mike@charthamfp.co.uk)

Website: [charthamfp.co.uk](http://charthamfp.co.uk)

Chartham Financial Planning Limited is an appointed representative of Best Practice IFA Group Limited which is authorised and regulated by the Financial Conduct Authority



# VALKYRIE

## ELECTRICAL

Dormansland based electrician with over 18 Years in the trade

Covering all Domestic, Commercial & Industrial Projects

Ex Services - Fully Insured - All Work Undertaken

T: 07764 283 235

E: [Valkyrie.electrical@gmail.com](mailto:Valkyrie.electrical@gmail.com)

Instagram: [@Valkyrie.Electrical](https://www.instagram.com/Valkyrie.Electrical)

*Discounts applied to RH7 Postcodes & Ex/ Current Services*

# Chronicles From My Cabin #5

Already in my seventh month on board MV Global Mercy the time is passing quickly. Each week there are new milestones reached and expectations set. Over 500 surgeries completed since our arrival back in Sierra Leone in September and many more being planned for the remainder of the field service here.



We start meetings not with the budget and forecast updates I'm used to from decades in business but with a list of the miracles we have seen or experienced. And I promise you there are plenty. Last week I was fortunate to witness eye patch removal for a number of patients who had undergone cataract surgery on the ship. The smiles as their eyes adjusted and vision cleared will be one of many memories I'll cherish.

While the surgeries performed on the ship are often life changing for patients and their families, Mercy Ships also focuses on wider scale change and strengthening healthcare services in the longer term. One of the ways this is being achieved is through a small team of Mercy Ship nurse mentors currently based in Connaught Hospital which is the largest hospital in Sierra Leone. Working in partnership with the Ministry of Health and a number of other agencies with special skills in areas such as sterile processing, the Mercy Ships team are helping to reduce infection rates and provide training and support for those with responsibility for surgical care.

During a visit to the hospital, one of the Directors was asked about the biggest benefits of the partnership with Mercy Ships. Interestingly he didn't refer to statistics about infection rates, or the number of nurses trained etc. He talked instead about the love, care and compassion the nurses from Mercy Ships modelled in their interactions with patients and caregivers. It was a wonderful endorsement of the value of this mission and a reminder that you can't put a number on everything.

As I write this message I'm aware everyone at home is starting to prepare for Christmas. Mine will be a different one this year. Warm and sunny for a start and I doubt there'll be mince pies available but we'll

celebrate regardless and I look forward to sharing another update early in the New Year. Wishing you all a healthy and happy start to 2026.

Theresa White



**JOIN THE FUN EVERY WEEK (TERM TIME)**

# **DORMANSLAND YOUTH HUB**

Connect, Create, and Explore Every Thursday at  
Dormansland Memorial Hall. 3.30–5.30pm.

School Years 6–11. £1 per young person appreciated.





**5★**

Food Standard Agency Rating

Registered Charity No 1165840

## **CAN YOU HELP?**

We are an independent charity run entirely by volunteers, providing freshly cooked meals to the elderly and disabled in the local parishes of Lingfield, Dormansland and Crowhurst for over 40 years. We operate from the kitchen at the Jennings Hall attached to the Community Centre in Lingfield.

**We are currently seeking new volunteers to help cook meals on a Monday Wednesday or Thursday 9am-midday once every 4 weeks.**

**Someone to wash tea towels once a month .**

**Deliverers on a Wednesday once every 4 weeks between 11.30-13-30**

If you would like to make a contribution to helping the more vulnerable residents in our local community, then call one of our friendly committee members and have a chat about any of these roles.

Please call our Meals on Wheels phone 07504 481289

Or pop in and see us in the kitchen next to the Jennings Hall Monday - Thursday





***CHRISTMAS  
SERVICES  
at  
ST. JOHN'S 2025***



*The first Christmas*

# Advent and Christmas Services & Activities at St. John's

**Sunday 7th December**

8am **BCP Communion.**

10am **Christingle Service for all ages.**

5pm **The Five** - Informal worship.



**Thursday 11th December**

3.30pm **Community**

**Christmas Crafts.**

(More details within this edition).

**Friday 12th December**

6pm **Lighting of the outside Christmas tree** with Carols and refreshments.

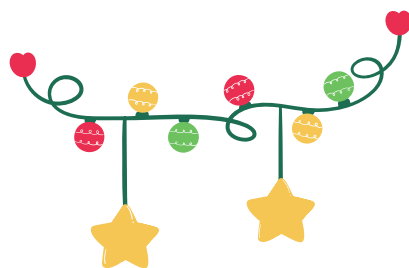


## Sunday 14th December

8am **BCP Communion.**

10am **Parish Communion & Sunday Smilers.**

5pm **The Five Christmas Worship Party.**



## Sunday 21st December

10am **Parish Communion.**

6.30pm **Carols by Candlelight.**

## Wednesday 24th December Christmas Eve

4pm **Crib Service.**

Please come dressed as a  
Christian Christmas character  
eg Mary, Joseph, angel, shepherd, king!

11.30pm **Midnight Communion.**



## 25th December Christmas Day

10am **All Age Communion.**



*Annie, Ian & Kat,  
and all at St John's  
wish you a very happy  
Christmas  
as well as  
God's richest  
blessings in 2026.*

*Happy Christmas*

# PAT'S GARAGE

Charlwoods Road, East Grinstead



**Servicing, Diagnostics,  
Mechanical Repairs, MOT's, Aircon's,  
Tyres, Batteries & Welding.**

**FRIENDLY ADVICE & SERVICE**

For enquiries please call  
**Chris Harvey**  
(01342) 321028 or 301003  
Pat's Garage,  
Unit 37, Charlwoods Road,  
East Grinstead, West Sussex,  
RH19 2HG.



Mon - Fri 8:00 - 5:30  
Sat 8:00 - 1:00 (MOT's only)



# JUST SLEEPERS

## Why Choose Us?

We have all types of sleepers in stock and we can supply and deliver to your location.

### Common uses include:

- ✓ Creating raised beds
- ✓ Creating steps
- ✓ Used as retaining walls
- ✓ Used as edgings
- ✓ Rustic outdoor furniture
- ✓ Water features
- ✓ As bridges
- ✓ Pergolas



Raised beds made easy. Please ask us about our kits or look at our website for our standard kits.



New Oak Sleeper  
100 x 200 x 2400  
Softwood Sleepers  
100 x 200 x 2400  
125 x 250 x 2400



Reclaimed Grade A  
German Sleeper  
150 x 250 x 2600

For further information please contact Mark on 07702 031741,  
email [mark@justsleepers.uk](mailto:mark@justsleepers.uk) or visit our website [www.justsleepers.uk](http://www.justsleepers.uk)

# News from our Village Post Office



## Hotline to Santa!

This year we have a collection box for your little ones to post letters to Santa. Each child will receive a sticker and a small treat (with parents permission). This will be in place **from the 1st December.**

Royal Mail have only given us suggested cut off dates for postage to overseas but in **the UK last posting dates 17th December 2nd class and 20th December for 1st class.**

May we take this opportunity to thank all our customers for their custom. We are so lucky to have the best customers!

*Love Mags, Elaine and Catherine*

**THANK YOU!**

POST OFFICE

### Suggested last posting dates for Christmas 2025

via Royal Mail & Parcelforce

Australia	Fri 5 Dec
Canada	Fri 12 Dec
France	Mon 15 Dec
Germany	Mon 15 Dec
Ireland (R.O.)	Mon 15 Dec
New Zealand	Mon 8 Dec
Poland	Mon 8 Dec
Spain	Mon 8 Dec
USA	Fri 12 Dec

These dates are for guidance only.

Royal Mail and Parcelforce remain fully operational up until Christmas, but we strongly recommend posting as early as possible to allow items to arrive in time.

For a full list of last posting dates, visit [www.postoffice.co.uk/last-posting-dates](http://www.postoffice.co.uk/last-posting-dates)



*East Grinstead*  
MATHS TUITION

Is your child troubled by  
trigonometry?  
Or quaking over equations?

Build your child's confidence with  
**one-to-one, in person  
maths tuition**

Arrange a  
**half-price taster session**

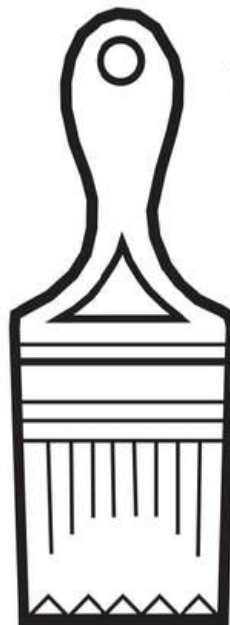
07410 207694

eastgrinsteadmaths@gmail.com

Charlotte Anderson

BA (Hons) Cantab; enhanced DBS checked

Clare Elizabeth



Painting and  
Decorating  
Services

Reliable  
Local  
Friendly

0777 532 8781  
clareelizabeth100@gmail.com



Dormansland Tennis Club  
welcomes new members. Annual  
membership is available, and our  
club offers junior and adult  
coaching and is represented in the  
Weald leagues; we welcome  
players of all standards.

We have two floodlit courts and our  
membership prices are lower than  
all other clubs in the area.

See our website for more information:  
[www.dormanslandtennisclub.co.uk](http://www.dormanslandtennisclub.co.uk)



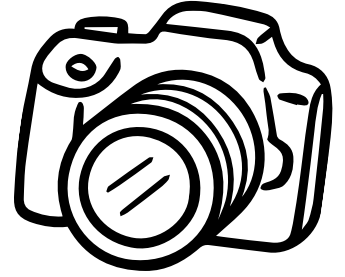
Oil, Gas and LPG heating  
and hot water experts.

Heat pumps, refrigeration and air  
conditioning service and breakdown.

Tel 01342 835071  
Email [info@heatcompany.co.uk](mailto:info@heatcompany.co.uk)  
[www.heatcompany.co.uk](http://www.heatcompany.co.uk)



# Fresh Focus for the New Year – a great time for photography



January is often a time for resolutions – a chance to take up a new hobby or rekindle an old passion. If you've ever thought about exploring photography, winter is a surprisingly good place to start. While many put their cameras aside, the colder months offer a quiet beauty: low golden light, glistening frost, long shadows, and misty landscapes waiting to be captured.

At **Tandridge Photographic Society**, members find inspiration all year round. Whether you're discovering photography for the first time or looking to refine your skills, the club offers a welcoming space to learn, share ideas, and grow creatively. Meetings include talks by experienced photographers, practical workshops, image critique evenings, and friendly competitions. There are also regular outings – from local woodlands and wildlife reserves to street photography sessions and seaside visits.

Our members use everything from phones to professional cameras, proving that great photography isn't about expensive equipment – it's about seeing the world with curiosity and imagination. Start this winter. To find out more visit [www.tandridgeps.org.uk](http://www.tandridgeps.org.uk) or email [info@vtps.org.uk](mailto:info@vtps.org.uk)

*Chris Fenton*

*on behalf of Tandridge Photographic Society*



# VIOLIN TUITION FOR ADULT BEGINNERS

It's never too late to learn a new  
skill! So why not give it a try?

Contact:

ANDREA ATKINSON  
BMus

OVER 25 YEARS  
TEACHING EXPERIENCE

Email: [andiviolin@outlook.com](mailto:andiviolin@outlook.com)

Tel: 07979694901

[andreaatkinsonviolintuition.co.uk](http://andreaatkinsonviolintuition.co.uk)



## Here to Help

Dormansland Diamonds are still very much here for the community in these difficult times. If you need any help or support, please call or text Lisa in confidence on 07710 917427.



For children aged 0-3 years old!  
Come and make new friends while your tiny p's play. Parent/Guardian MUST stay with their little one

Refreshments available

Every Tuesday from 30th September  
10am-12pm (Term Time ONLY)  
in the Lady Chapel

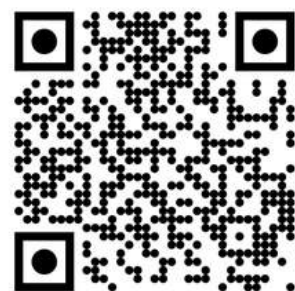


POP UP SHOP!

THE OLD HOUSE AT HOME PUB, DORMANSLAND

6-9PM

FIRST THURSDAY OF EVERY MONTH



[WWW.THETHREEFISH.COM](http://WWW.THETHREEFISH.COM)

# News from the Team at Claridge House



As the days grow shorter and the air turns crisp, there's a quiet magic in settling into winter. We're allowing ourselves to look inwards, slow down and find joy in the small, simple things

The house is really coming into its own, too, with cozy blankets, warming soups and twinkling lights. We're embracing the spirit of togetherness and community and we've got lots of festivities planned this season, whether you're looking for a tranquil escape or a joyful gathering with like-minded souls.

We're delighted to be part of the community Warm Hub – **every Wednesday until the end of February from 10am-midday**. Please share with friends, neighbours – anyone you think might benefit from a peaceful space, hot cuppa and WiFi. We'd love to see some friendly faces.

We're also looking forward to hosting our Christmas Healing Day on the **6th December from 11.30am-4.30pm**. This is a **FREE** entry event, so if you're interested in all things Wellbeing, do come along and enjoy a variety of stalls, talks and learn more with a range of workshops. Enjoy refreshments and nibbles and take some much-needed time out for yourself in the chaotic run up to Christmas. There will be everything from Reiki treatments, Sound healing workshops, breathwork sessions, mindfulness, kinesiology and more! Cash & Card accepted for stalls & treatments.

Now that the Christmas countdown has begun, it's worth mentioning our little Claridge House shop! We've a got a lovely range of wellness-themed gifts, perfect for your friends and family. We stock candles, journals, jewellery, crystals, handmade items, our own recipe book, homeware, fairtrade goods and much more. Please feel free to pop in and take a look and support local small businesses too!

Lastly, to really get into the festive spirit, we're inviting the community to join us on the evening of the **23rd December** for a joyful evening of carol singing by local group A Capella. Arrive from **7.15pm** for mince pies and hot chocolate. All Welcome.

For everything else happening over the festive season – including an afternoon tea and reiki on the 13<sup>th</sup> Dec, Winter Solstice Evening on 20<sup>th</sup> Dec and Creative Collage evening on 29<sup>th</sup> Dec – Please check our website [www.claridgehouse.org.uk](http://www.claridgehouse.org.uk). We have lots on non-residential activities happening – perfect for local residents. We look forward to seeing you

*Kate Fletcher*

## Second time lucky!

The first tree in this location on Moor Lane was flattened by a car so rather hoping this one does not meet the same fate. It is a Prunus Kanzan – flowering cherry tree so goes well with our village sign. I will be out with my watering devices during the next few months to keep it alive.



All the trees planted last year seem to have survived the exceptionally dry spring/summer this year and with the recent rains should now be well bedded in. As they are a mix of varieties it was great to see the different colours.

There is a poorly looking tree opposite St John's, but it may have got grumpy due to the dry weather or given up – so only time will tell. Certainly, we will look to replace this if it doesn't survive as this tree was donated by a local villager.

A big thank you to Robbie Stewart of Surrey County Council who has been hugely supportive of our tree planting efforts around the village. Also to David Bright and his sister who has been watering trees throughout the year as well as my helpful hubby.

So enjoy the rest of the autumn colours, which have been spectacular.

*Fiona French, your tree warden*

# Dementia 1st

for care & support

Dementia 1st provide Day Care services for people with dementia at Lingfield & Dormansland Community Centre, every Monday, and at Regent House, Horley every Thursday from 10am until 4pm.

Please telephone 01883 818310 for more information and to book your free taster session!

We also host singing groups on the 1st Monday of the month at Lingfield and the 3rd Thursday of the month at Horley from 10:30 for refreshments, 11am -12pm for singing (£5 pp, carer goes free).

info@dementiafirst.org.uk  
www.dementiafirst.org.uk  
Follow us on Facebook!

Registered Charity No. 1172242  
Registered Address: The Byre, Pendell Road, Bletchingley, Surrey RH1 4QH



## Oyster Picture Framing

Carewell Farm, St Piers lane, Lingfield. RH7 6PN

- Local friendly service
- Creative advice
- Bespoke framing
- Over 25 years experience

Telephone: 01342 833266

Email: martin@oysterpictures.co.uk

Website: www.oysterpictures.co.uk

# MR Computing

38 years of combined experience in IT

Local, Professional and Family Owned  
business since 2005

**NO FIX NO FEE & NO CALL OUT CHARGE**

- Punctual visits at an agreed time or collection & drop off service.
- Apple & Windows computer & tablet/phone support for Business & Home
- Reliable wireless range improvement for Home & Business.
- Most work carried out in a one hour visit. Fixed price workshop repairs.
- Repairs, speedup and maintenance, Data transfer/recovery, Computer malware/virus removal.
- New computers supplied/set up and made to feel familiar.



&



Call Mark 01342 349109  
& Sue on: OR  
0800 6129534  
Email: office@mrcomputing.net



Website - www.mrcomputing.net  
Reviews - mrcomputing.net/reviews



Safe, Secure & Affordable Dog Walking Field  
near Lingfield

**£9 per hour**

Our beautiful fields are ideal for dogs who like the freedom  
to run and enjoy sniffs and smells but maybe sometimes  
don't want to go home or deal with others!

[www.CarewellCanines.co.uk](http://www.CarewellCanines.co.uk)

[contact@carewellcanines.co.uk](mailto:contact@carewellcanines.co.uk)  
01342 886199 / 07968 237702

Carewell Farm, St Pier's Lane, Lingfield, Surrey  
RH7 6PN



Self Storage near Lingfield  
with 24/7 access

320, 160 & 90 sq ft units available from £75 pcm

For enquiries or advice please contact

Charlie Holgate

01342 885 255

07968 237 702

[contact@carewellcontainers.co.uk](mailto:contact@carewellcontainers.co.uk)  
[www.carewellcontainers.co.uk](http://www.carewellcontainers.co.uk)

## H2o Plumbing

General Plumbing Services,  
alterations & bathroom  
installations.

No job too small  
C & G trained

Call Richard on  
01883 712523 or  
07876 450420

## SIMMONS DOMESTIC

Repairs—Spares—Servicing

Washing machines, washer dryers,  
Tumble dryers, Dishwashers,  
Vacuum cleaners, Electric cookers

**Bosch washing machine specialist**

**Established 1978**

**NO CALL OUT CHARGE**

Reliable Engineers, Low Labour Cost

**GUARANTEES AVAILABLE**



01342 834167

07976 981909

# ALEX JONES FUNERAL DIRECTORS

Serving the community since 1996

- OFFERING A CARING AND PERSONAL SERVICE
  - BEAUTIFUL CHAPELS OF REST
    - HOME VISITS AVAILABLE
    - MEMORIAL MASONRY
    - PRE-PAID FUNERAL PLANS
- AN INDEPENDENT FAMILY OWNED BUSINESS

## LINGFIELD

1 East Grinstead  
Surrey  
RH7 6EP  
Tel: 01342 832 534

## OXTED

92 Station Road East  
Surrey  
RH8 0QA  
Tel: 01883 730 383

## FOREST ROW

1 Ashdown Court  
Lewes Road  
East Sussex  
RH18 5EZ  
Tel: 01342 822 399

## EDENBRIDGE

70 High Street  
Kent  
TN8 5AS  
Tel: 01732 860 047



**Golden Charter**   
Smart Planning for Later Life



Alex Jones Funeral Directors Limited is an appointed representative of Golden Charter Limited trading as Golden Charter Funeral Plans which is authorised and regulated by the Financial Conduct Authority (FRN:965279).



We hope the community appreciated the Remembrance poppy display around the WWI 'Tommy' at Newhache this year, and thanks to those people that sent us kind messages.

November saw us welcome a new President for the coming year, Adrienne Brady. I'm sure she will take our lovely group from strength to

strength! And Following our brief AGM we heard from Help for Heroes ambassador, Barrie Griffiths with a personal account of how this charity helps ex-servicemen & women.

We have our 'Christmas Curry & Shenanigans' in December where an enormous takeaway arrives at the Parish Room! This is a members only meeting.

On **13th January** we will have a talk on the life & work of Coco Chanel which should make for an interesting evening.

Our Sole Sisters walking group have recently taken to Ashdown Forest and next walk is planned for Kingscote. Several of our members are off to the V&A to see the Marie Antoinette Exhibition and a group will enjoy Glow Wild at Wakehurst.



We are also offering a Christmas Wreath making workshop to our members at the beginning of December.

Our full meeting schedule and more information about our subgroups (which are exclusive and free to all members) are available on our website [www.ywidormansland.org.uk](http://www.ywidormansland.org.uk).

The YWI Dormansland meets at the Parish Rooms in The Platt at 8pm - 9.45pm usually on the 2nd Tuesday of the month and we always welcome new members. If you are interested in becoming a member, or would like more information, please drop us a line at the email address below. If you have not been a member before your first meeting is free.

*Annie Robinson* on behalf of YWI Dormansland

## BCM Electrical

Specialists in LED lighting,  
CCTV and greener homes.

All electrical work undertaken.

No job is too small.

New builds, Re-wires,  
Fault finding, Testing,  
Data, TV Cabling,  
Outside Lighting & Power

Free, no obligation quotations

Contact: Ben Robinson

Tel: 07456 411636

bcmelectricaluk@gmail.com

www.bcmelectricaluk.co.uk



## Puppy & Dog Training!

6 week training & socialisation courses in Lingfield  
& Hartfield

For pups under 20 weeks, family friendly, run by  
accredited dog trainer!

Private 1:1 training for all ages

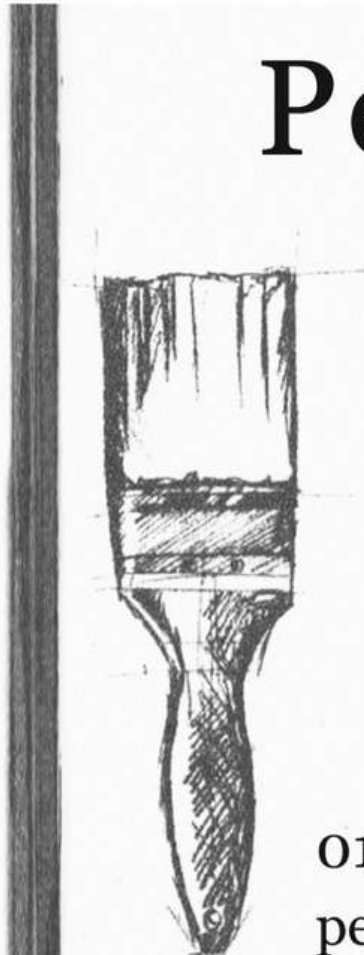


SCAN ME!

07387553234

SARAH@MYCOMPLEXCANINE.CO.UK  
INSTAGRAM.COM/MYCOMPLEXCANINE/  
FACEBOOK.COM/MYCOMPLEXCANINE

# Peter England Decorating Ltd



- Domestic and Commercial
- Fully insured
- References available
- Free estimates and advice
- All aspects of work undertaken

01342 457 321 • 07743 912 557  
peterenglanddecorating@live.com



# More dates for your diaries & don't forgets!



Every  
Tuesday

Pop-in & chat at the SS Peter & Paul, Lingfield. 10-noon.



Every  
Tuesday

**Lingfield table Tennis Social Club**  
Victoria Club, Lingfield. 7-6.30pm.



1st Tuesday  
of month

**SEND peer support group** for parents & carers.  
Dormansland baptist church. 10-11.30am.



Every  
Wednesday

For secondary school age youngsters.  
Scout HQ, Saxbys Lane. 4-6.30pm.



1st Saturday  
of month

**Breakfast Hub** at SS Peter & Paul church, Lingfield.  
Bacon rolls etc. 9-10.30am.



2nd Saturday  
of month  
10am-1.30pm

**Repair Cafe East Grinstead.** At Glen Vue Community  
Hub In Station Road. breathing life back into broken  
items and gadgets



3rd Saturday  
of month  
10am-1.30pm

**Repair Cafe Forest Row.** At the Community Centre In  
Hartfield Road. breathing life back into broken items and  
gadgets



3rd Wed.  
of month  
1.30-3pm

Support group for parents/carers for those with epilepsy  
and/or learning difficulties.  
St Peter & St Paul's church, Lingfield.



Last Sat  
of month  
from 12.30pm

A free, simple lunch is offered at St Bernard's  
church, Lingfield



Last Tues  
of month  
from 7.30pm

**Wine & Wondering!** Spiritual **not** religious!  
The Star, Lingfield. Next on **27<sup>th</sup> January.**



Last Thurs  
of month

**Age UK Surrey Tea & Chat.** 2.30 - 4pm  
Jennings Hall, Lingfield & Dormansland Comm. Centre.  
Anyone over 50 is welcome



Sunday  
9th Nov.

During the 10am service at St John's. We look forward  
to seeing you! 2nd Sunday of each month.



Last Sunday  
of month

**Men's Walks.** 10am meet at  
Viewpoint Centre in Moons Lane.





## Watch out the gnomes are coming!

Our crafty ladies have been hard at work and will be installing some Christmas decorations around the village for your

enjoyment. This has been partly funded by the parish council. Many thanks to them.

We hope you like them!

*The YWI Kindred Krafters*



## From the Editor

Thank you to everyone who contributed to this edition. Once again we are bursting at the seams!

Copy date for the **February** edition is **Sunday 18th January**. I look forward to hearing from you about upcoming events or anything you think may be of interest to you fellow residents..

**Annie Robinson**

**[editor@dormanslandvillagevoice.co.uk](mailto:editor@dormanslandvillagevoice.co.uk)**

*The views, opinions and updates published in this magazine are those of the content authors and do not necessarily reflect or represent the views and opinions held by the Village Voice. We do our best to check facts wherever possible.*

## Please Support The Village Voice

If you are able and would like to support the cost of bringing this magazine to your door and ensuring we all stay connected, please scan this QR code to make a donation. Alternately, [email the editor](#), or call St John's Treasurer, John for details of other ways to contribute, thanks.



PREP OPEN  
MORNING

SAT 7TH  
MARCH 2026



*"From the moment we first visited, we knew it was somewhere they would thrive."* Current Parent




Lingfield  
COLLEGE  
PREP

An independent Prep School for  
children aged 0 - 11 years.

To book a place, visit our website:  
[lingfieldcollege.co.uk](http://lingfieldcollege.co.uk) or call 01342 838153

# Dormansland Village Activities and useful numbers

<b>Action Research, Dormansland Committee</b>	<b>Vicky Bown</b>	<b>01732 863950</b>
<b>CARE in East Grinstead and Lingfield</b> (transport to medical appointments is provided by volunteers for those without other means of transport - book between 9:00 am and 2:00 pm)		<b>01342 410086</b>
<b>Carnival Committee</b> <b>College of St Barnabas</b>	<a href="mailto:dormanslandcarnival@gmail.com">dormanslandcarnival@gmail.com</a> <b>Chaplain</b> <a href="http://www.st-barnabas.org.uk">www.st-barnabas.org.uk</a>	<b>01342 870260</b>
<b>Cricket Club</b>	<b>David Tribe</b> <a href="mailto:hypernibe@gmail.com">hypernibe@gmail.com</a>	<b>07854 696779</b>
<b>Crimestoppers</b>		<b>0800 555 111</b>
<b>Dormans Evening WI</b>	<b>Karil Greenhalgh</b> <a href="http://www.dewi.chessch.co.uk">www.dewi.chessch.co.uk</a>	<b>01342 832038</b>
<b>Dormansland Baby &amp; Toddler Group</b>	<a href="http://www.tinyurl.com/4wxf6d99">www.tinyurl.com/4wxf6d99</a>	
<b>Dormansland Diamonds</b>  <b>@dormansland diamonds 2020</b>	<b>Lisa Felton</b> <b>Clive Robinson</b> <b>Alison Hills</b>	<b>07710 917427</b> <b>07432 140892</b> <b>07846 523226</b>
<b>Dormansland Parish Council Clerk</b> <a href="http://www.dormansland.org.uk">www.dormansland.org.uk</a>	<a href="mailto:parishclerk@dormansland.org.uk">parishclerk@dormansland.org.uk</a> PO Box 335. Lingfield Delivery Office. Gun Pit Rd. Lingfield.RH7 6AR	<b>07395 323456</b>
<b>Dormansland Rockets FC</b>	<b>Russel Foreman</b>	<b>07784 472217</b>
<b>Dormansland Primary School</b> <a href="http://www.dormansland.surrey.sch.uk">www.dormansland.surrey.sch.uk</a>	<b>Mrs Faye Davies and Mr Mark Cook</b> Acting Head Teachers	<b>01342 832359</b>
<b>Dormansland War Memorial Hall Bookings</b>	<b>Adrienne</b> <a href="mailto:dwmhtrustees@gmail.com">dwmhtrustees@gmail.com</a>	
<b>Horticultural Society</b>	<b>Tina Boyce</b>	<b>01342 833655</b>
<b>Hospitals:</b> East Surrey Crawley Caterham Dene Queen Victoria		<b>01737 768511</b> <b>01293 600300</b> <b>01883 837512</b> <b>01342 414000</b>
<b>Lingfield &amp; Dormansland Community Centre</b> <b>Lingfield Silver Band</b> <b>Lingfield Surgery</b>	<b>Terri Pagram, Manager</b> <b>Julie Fuller</b>	<b>01342 833893</b> <b>01342 833400</b> <b>01342 836327</b>
<b>Meals on Wheels</b> <b>MP for East Surrey Note elections on 4/7)</b>	<b>Sara Watson &amp; Sally Knight</b> <b>Claire Coutinho</b> <a href="http://www.clairecoutinho.com">www.clairecoutinho.com</a>	<b>07504 481289</b> <b>0207 219 5972</b>
<b>Neighbourhood Watch/COMNET</b>	<b>Geoff Ledden</b>	<b>01342 836775</b>
<b>Parish Room Bookings</b> <b>Police (Surrey)</b>	<b>Anne van Vliet</b>	<b>01342 833183</b> <b>101</b>

<b>Riding for the Disabled</b>	<b>Pim Ball</b>	<b>01342 870426</b>
<b>Sewing Classes</b>	<b>Cynthia Jones</b> <a href="mailto:mysewinglessons@gmail.com">mysewinglessons@gmail.com</a>	<b>07929 878563</b>
<b>South-East Water Emergency Number (24/7)</b>		<b>0333 000 0365</b>
<b>Tanzen Academy (Dance Lessons)</b>	<a href="mailto:kathy@tanzenacademy.uk">kathy@tanzenacademy.uk</a>	<b>07894 116254</b>
<b>Tennis Club</b>	<b>David Coward</b> <a href="http://www.dormanslandtennisclub.co.uk">www.dormanslandtennisclub.co.uk</a>	<b>07738 195669</b>
<b>Urban Saints (Baptist Church)</b>	<b>David Jackson</b> <a href="mailto:dbcurbansaints@gmail.com">dbcurbansaints@gmail.com</a>	<b>01342 314738</b>
<b>Little Chums Pre School &amp; Forest School</b>	<b>Julie Duggan</b> <a href="http://www.littlechums.com">www.littlechums.com</a>	<b>07849 308762</b>
<b>YWI Dormansland</b>	<b>Annie Robinson</b> <a href="http://www.ywidormansland.org.uk">www.ywidormansland.org.uk</a> <a href="mailto:infoywidormansland@surreyfedwi.org.uk">infoywidormansland@surreyfedwi.org.uk</a>	<b>07798 823115</b>

---

## Churchwardens at St John's

<b>Mr Ray Daines</b> Gatewood, Blackberry Road, Felcourt, RH19 2GH		<b>01342 870358</b>
<b>Helen Lee</b> 32 Dorset Gardens, East Grinstead. RH19 2SD		<b>07876 352245</b>
<b>Parish Treasurer &amp; Envelope Scheme Recorder</b> 11 Pine Way Close, East Grinstead, RH19 4JR	<b>John Pordum</b> <a href="mailto:pordum@gmail">pordum@gmail</a>	<b>07711 487178</b>
<b>Messy Church</b>		<b>01342 832391</b>
<b>Child Protection and Safety Officers</b>	<b>Mrs Rosemary Williams</b> <b>Mrs Susan Calamassi</b>	<b>01342 834225</b> <b>01342 833703</b>
<b>Parish Room Bookings</b>	<b>Mrs Anne van Vliet</b>	<b>01342 833183</b>
<b>Church Flowers</b>	<b>Mrs Josien Yates</b>	<b>01342 832159</b>
<b>Village Voice Editor</b>	<b>Anne Robinson</b> <a href="mailto:editor@dormanslandvillagevoice.co.uk">editor@dormanslandvillagevoice.co.uk</a>	<b>07798 823115</b>
<b>Advertising Manager</b> 96 West St, Dormansland, RH7 6QT	<b>Mrs Roz Daly</b> <a href="mailto:roz.daly2@btinternet.com">roz.daly2@btinternet.com</a>	<b>07732 711055</b>
<b>Printers: En-route</b>	<a href="http://www.en-route.co.uk">www.en-route.co.uk</a>	<b>01342 894900</b>

Front cover photograph

Colouring by Mia Brady



**To the army of volunteers that make the production & distribution of this magazine possible**

---

# Worship at St. John's

[www.stjohnsdormansland.org](http://www.stjohnsdormansland.org)

## Sundays

Said Communion (1st, 2nd and 4th Sundays of the month) 8.00am  
Family Communion on 1st Sunday, Parish Communion all other  
Sundays. Sunday Smilers (children 4-11) meets on 2nd Sunday. 10.00am  
Informal Service every Sunday. 5.00pm

## Weekdays

Wednesday - Service of Compline on Zoom 8.00pm  
Friday - Prayer Time. St Andrew's chapel. 4.00pm

## Vicar of Lingfield and Dormansland

The Reverend Ian Whitley 07961 382293

## Associate Vicar

The Reverend Annie Kurk 07774 437471  
St John's Vicarage, The Platt, Dormansland, RH7 6QU  
email: [vicar.dormansland@gmail.com](mailto:vicar.dormansland@gmail.com)

Benefice administrator - [officelingfieldppchurch@gmail.com](mailto:officelingfieldppchurch@gmail.com) 01342 832021  
Centenary Room Bookings - Benefice Office 01342 832021

---

# Dormansland Baptist Church

[www.dormanslandbaptistchurch.org.uk](http://www.dormanslandbaptistchurch.org.uk)

Sunday Morning Service 10.30am

## Minister

Rev. Jacqueline Parson [dbcminster@gmail.com](mailto:dbcminster@gmail.com)

07551 493418

---

# St Bernard's Catholic Church, Lingfield

Sunday Morning Service 9.00am

Father Jack Lusted 01342 325705

---

# Claridge House Quaker Meeting

[www.claridgehouse.org.uk](http://www.claridgehouse.org.uk)

Sunday Morning Meeting for Worship 9.45am

Please contact Tony Franklin ([barandtony@aol.com](mailto:barandtony@aol.com)) or Lesley  
Evans ([lesleybcevans@gmail.com](mailto:lesleybcevans@gmail.com)) if you'd like to attend.

Resident Friend 01342 832150

Don't use the rest,  
instruct the best



We include **PREMIUM** professional photography



Rated 5 stars for **VALUE** for money



**NOTHING** to pay until the sale completes



Open **8AM-8PM** 7 days a week



We advertise on **150+ WEBSITES GLOBALLY**



We accompany **EVERY** viewing

Offices in **Oxted & Sevenoaks** with the strongest coverage in the **TN8** postcode.

(We cover large areas, if you are unsure if we cover you please call us)

Do **NOT** instruct an estate agent until you have spoken to **Platform Property!**

**We offer £100 to anyone recommending us a property to sell**

keep this flyer and give to anyone you know looking to move – there are no limit of vouchers available!

OXTED & EDENBRIDGE

**01883 460373**

SEVENOAKS

**01732 617212**

platformproperty.co.uk

sales@platformproperty.co.uk





# 35 years

as your independent  
local estate agent



01342 837783

lingfield@robertleech.com

Robert  
Leech.



EST 1989

  
**LINGSTEAD**  
CONSTRUCTION LTD

01342 459936

[www.lingsteadconstruction.co.uk](http://www.lingsteadconstruction.co.uk)

Home Extensions, Loft & Garage Conversions.

General Building & Maintenance.

Foundations and Groundworks .

Kitchen Alterations and installation.

Driveway construction.

106 West Street, Dormansland, Surrey, RH7 6QT

