

The
**Village
Voice**

**Dormansland
February 2026**



**Open now in the Centenary Room, The Platt
(behind St John's church)**

Finally, a dog friendly Artisan Café opens in Dormansland!



Penny's Place welcomes the communities of Dormansland and Lingfield giving residents a new reason to smile — along with their four-legged friends.

Penny's Place, a new community artisan café in the heart of the village, has opened its doors in the Centenary Room, behind the beautiful St John's Church, offering a warm and welcoming space for locals all around to relax, connect, and enjoy fresh, homemade food whilst drinking good quality coffee (or tea).

The café is the creation of local resident Nicole Chamberland, who has called Dormansland home for nearly 12 years, alongside her family and beloved dog Penny — the café's namesake. Nicole sold her corporate London business in 2024 and dreamed of opening an artisan coffee space in her own neighbourhood that celebrates everything she loves about the village: friendliness and community.



"I've always loved how special Dormansland is," said Nicole. "It's a place where people truly look out for one another, and I wanted to create a café that feels like an extension of that — somewhere welcoming for everyone, including their dogs."



Artisan coffee, homemade focaccia sandwiches and freshly baked pastries & desserts

Nicole brings her passion for coffee and quality ingredients to every aspect of the menu. Visitors will enjoy true artisan coffee as well as enjoy freshly baked pastries, homemade focaccia sandwiches, and locally made desserts, all prepared with care and attention to detail. Everything at Penny's Place is crafted to highlight flavour, freshness, and a love for local produce. Takeaway options are also available for those on the move.

Open six days a week, it aims to become a true community hub — a place where residents, their families and visitors alike can finally share great coffee, excellent food and good company.

Locals are encouraged to follow Penny's Place on Facebook for the latest opening hours, menu updates, featured items, and upcoming community events.

For more information, please contact:

Nicole email: nchamberland75@gmail.com

& find us on Facebook: @PennysPlaceDormansland



Artisan Coffee & Snacks

Opening hours

Monday-Friday

08:30-12:00

& 14:00-16:30

Saturday

08:00 - 14:00





From Revd Annie

Happy New Year & Looking Back at 2025

As the new year is already in full swing, I thought it might be interesting to take a moment with you to look back over the last 12 months – remembering what delights and disasters the year has brought, and revisiting some of the stories that took our

attention in 2025.

Why? Well, I read, 'looking at the year as a whole helps us situate ourselves in the wider story of our culture – the bigger trends, the currents flowing through all that's happening.' Or in other words, where has God been at work last year? In all of it, through the power of the Spirit, we are called to reflect the light of Christ – affirming what's godly, lovingly changing what's not, and embodying the life of the kingdom to come.

1. An American president with a global impact

Oh yes – Trump 2.0 began this year. Back in January, were we ready for how the 45th and 47th US president would impact the UK church – or maybe you didn't think he did? On related themes, later in the year we reflected on the trend of Christians supporting leaders who seem short on compassion, and how we should engage with the thorny issue of patriotism in the UK.

2. The love of the League Cup

In March, it finally happened: Newcastle won some silverware. They beat soon-to-be Premier League champions Liverpool in a nail-biting match at Wembley – was this an answer to prayer? Who would Jesus support if he were physically alive today?

3. Adolescence: a cry for help from our young people

Did you watch it? Few TV dramas have gone as viral as fast as Adolescence, the harrowing story of a family whose 13-year-old son

has killed a female classmate. I read this...'Darby Moore explored how, in its swirl of social media toxicity, childhood pressure, and social breakdown, it nailed a growing youth crisis in our culture – and how we might respond in our own lives.' Did it make a difference to you?

4. The Israel-Iran war is a warning for us all

Live conflict and the threat of escalation were ever-present in the news this year. As Israel and Iran's war overflowed into direct aggression. Did it affect you? And if not, why not? Peace-making starts at home – because but for the grace of God, there go we.

5. Religion, conscience, and the assisted dying debate

The assisted dying bill was a hot topic in politics – the legislation, on which MPs voted according to conscience rather than party whips, caused heated debate across the country. Is there a place for so-called 'private' faith to influence major public issues like this?

6. The unexpected hero at Gate 8

I loved this story. It was a reminder that change happens one person, place, and task at a time. A mum on holiday took charge of Corfu airport and saved staff and passengers alike from travel chaos. It was the perfect picture of how each of us can make a transformative difference where we are.

Whatever sphere of society God has placed you in, whatever bit of culture you get to mould, may the year ahead be full of joy, peace, and good fruit – for the glory of God and the good of Dormansland and the world.

Revd Annie

**TUESDAY 24TH FEBRUARY
3.30-5PM**

CENTENARY ROOM, ST JOHN'S CHURCH.

A SNACK IS PROVIDED.

**STORIES & ACTIVITIES WITH A BIBLICAL THEME
FOR CHILDREN AGED 3-11 & THEIR PARENTS/CARERS**

CHILDREN MUST BE ACCOMPANIED BY AN ADULT

JOIN THE FUN EVERY WEEK (TERM TIME)

DORMANSLAND YOUTH HUB

Connect, Create, and Explore Every Thursday at
Dormansland Memorial Hall. 3.30–5.30pm.

School Years 6–11. £1 per young person appreciated.



**Meeting Up Together
& Community Hub!**



Centenary Room, St John's
10am-12 noon. All welcome
(1st & 3rd Tuesdays)



Above. We welcomed the 1st Lingfield & Dormansland Cubs to a Christmas craft session

Left. Santa visited the children at the tree lighting!

CHRISTMAS
at **ST JOHN'S**



Dormansland Primary Christmas Carol service



Beautiful decorations made by the children that attended our Messy Christmas crafts & by the cub scouts.



Above. The Christmas crib. Many thanks to all the children that dressed up to make the Crib service extra special.

Left. Preparations for the 'five' Christmas party!

Lingfield Marathon Minibus Shopping Trips.

Upcoming shopping trips in February are:

- Friday 6th. Sainsburys, East Grinstead
- Friday 13th. Morrisons, Oxted.
- Friday 20th. Tesco, 3 Bridges.
- Friday 27th. Crawley town centre & M&S Foodhall at Acorn Retail Park.



Suggested donation per trip is £3. Call Scott on 07710 269369 to book your place.

East Grinstead Natural History Society (EGNHS)

All our meetings take place on the 3rd Monday of each month..7.30 to 9.30pm, at Trinity Road Methodist Church, Lingfield Road, East Grinstead, RH19 2HA.

Our AGM on Monday 19th February kicks off our 2026/7 season, and outlines what we have planned during this year, for both indoor and outdoor field trips/visits.

All most welcome to join us and find out more.

Refreshments will be available...

£4.50 for visitors.

£3.00. Members

Lyn Maggs....Chair and programme Secretary.

07709 606570.



Sunday 8th February

During the 10am service at St John's. We look forward to seeing you!

Neighbourhood Watch Update



Latest available reported crime between 6th November 2025 and 14th January 2026. Please remember these statistics are only as good as the information received so

please report any crimes to ensure both an accurate reflection but also greater support from Surrey Policing for our village.

I'm sad to say that **12 crimes** have been advised via the Tandridge Neighbourhood Watch Newsletter for Dormansland during this 10 week period.

Burglary Residential including sheds and garages

Dormans Road, Dormansland. Between 23rd October and 6th November the padlock of an outbuilding used for storage was forced open but nothing was stolen from the building

Mutton Hill, Dormansland. Around 20.45 27th November the victim returning home challenged two males who were coming out of the garage which had been entered via the unlocked rear door. The suspects immediately drove off. One male was described as white, around six feet tall, chubby, shadow under his eyes, looked glassy eyed, had a local accent and was wearing a thick coat with the hood up. The second male was described as white, bald and wearing a zip up cardigan top and jeans. Subsequently a male was arrested and has been bailed whilst enquiries continue.

Station Road, Dormansland. Overnight on 27th November 27th to 28th a container was broken into and four cast iron stoves were stolen.

Eden Vale, Dormans Park. Between 17.50 and 20.30 on 24th December suspects climbed onto a garage roof before jumping onto a first floor balcony of a house. They forced open a door into a bedroom before undertaking an untidy search. Several high value watches were taken along with cash and currency. No search was undertaken of any of the ground floor rooms and the suspects left via the first floor balcony.

Theft

Racecourse Road, Dormansland. Between 07.19 and 07.59 November 11th a black Mercedes van was used by suspects to steal cooking oil from a hotel and the racecourse.

Vehicle Crime

Jeddere Cottages, Dormansland – Theft. Between 14.00 November 9th and 13.30 November 10th front index plate LY78GXT was stolen from a car.

Lake View, Dormans Park. Overnight on 9th to 10th December index plates GV18 ECT were stolen from a car.

High Street, Dormansland – Keyless Theft. Around 03.54 on 11th December a silver BMW index WV71 UBD was stolen.

Mutton Hill, Dormansland – Theft. Between 10.30 and 17.10 on 17th December index plates GX05 RUA were stolen from a car.

West Street, Dormansland – Theft. Between 02.30 and 10.00 on 27th December index plate A22 CMA was stolen from a car.

Station Road, Dormansland – Theft. Overnight on 27th to 28th December index plates RV67 OKP were stolen.

Blackberry Lane, Dormansland – Criminal Damage. Between 10.35 on 10th January and 09.53 on 11th January the rear window of a car was smashed.

Please join the Neighbourhood Watch community as additional information is shared, providing guidance on how to secure your property, scams etc, which are all very useful.

Clive Robinson.

One of your NeighbourHood Watch Co-ordinators

In the words of Shaw Taylor..... 'keep 'em peeled!'



Dormansland Baptist Church Community Hub

Fridays
10-2pm



*Tea, coffee, cake
and light lunches
available.*

*Offering a calm and warm environment for you to come sit,
work, read, relax or knit etc.*

Lingfield & Dormansland Community Centre



OPERA NIGHTS

Saturday 8th February, 7.30pm

Tickets £16

Licensed bar/doors open 7pm



THE CRITIC

Sunday 9th February, 3.30pm

Tickets £5

Doors/refreshments at 3pm, film starts 3.30pm



QUIZ NIGHT

Saturday 8th March, 7.30pm

Tickets £12

Licensed bar/doors open 7pm

Tickets available online: www.lingfieldcentre.org
or from the centre office: 01883 833893
enquiries@lingfieldcentre.org





Junior parkrun coming to Lingfield..... but only with your help!

Robert Mitchell from Lingfield Sports Club is working with Scott McDonald from Lingfield Running Club to try to set up a Junior Park Run in Lingfield this year. In case you are not familiar with the concept, the below is quoted from the Park Run website

<https://www.parkrun.com/about/join-us/junior-parkrun/>

“Junior parkrun is a free, fun, friendly, weekly, community event organised by volunteers of all ages for children aged 4 to 14.

2k junior parkrun events take place on Sunday mornings in the UK, Ireland and Australia.

Junior parkrun is a great introduction for all the family to be physically active outside together. Walk, jog, run, volunteer or spectate with us.

Taking part is easy! Once you have registered your child, their account will have a barcode to bring along on Sunday morning to take part in junior parkrun.

Our junior events offer an opportunity for the whole community to come together and get involved. We want to encourage people to walk, jog, or run and volunteer together – junior parkrun is for everyone!”

Although there is a Park Run in East Grinstead the nearest Junior ones are Reigate or Crawley.

There are 3 preliminary requirements.

1. Landlord’s permission. This we have as we will use the Lingfield sports ground.
2. Sufficient volunteers.
3. £4,800.

It will be a Park Run event and the money is paid to an account with Park Run specifically for a Lingfield event. We are trying to raise the £4,800 from a variety of sources e.g. Tandridge Together, Parish Council etc.

Our stumbling block at the moment is item 2 so If anyone is interested in helping with volunteering at Junior Parkrun on future Sundays then please contact me. I assure you even only the occasional volunteering would be helpful!

My email address is
scottkmcdonald64@gmail.com
I look forward to hearing from you.

Scott McDonald



A concert featuring works by Boulanger, Elgar and Parry

East Grinstead Choral Society presents Faure Requiem in an arrangement for strings, harp and organ by David Hill.
The concert will also feature works by Boulanger, Elgar and Parry.
Music Director Phil Wilcox

Saturday, 21st March 2026. 7pm at St Swithun's Church, East Grinstead RH19 3BB.

Adult: £20; Under 18 FREE

For further information and tickets visit www.egcs.co.uk/events/

Fiona Ablett

EGCS Publicity



DORMANSLAND PRIMARY SCHOOL PTA

**FEBRUARY
2026**

Happy New Year!

Happy New Year from everyone at Dormansland School. We wish you a joyful, healthy and successful year ahead.

Support Dormansland School – Every Little Helps

Dormansland Primary School relies on community support to give our students the best opportunities. If you'd like to help, here are some ways you can make a difference:

- **Raise donations while you shop**

Use [Easyfundraising](#) to support Dormansland PTA at no extra cost. Choose from 8,000+ retailers, shop as usual, and the brand donates a commission to the school.

- **Play the Tandridge Together Lottery**

Join the weekly draw at [Tandridge Together Lottery](#) and select Dormansland PTA. Every ticket supports local causes while giving you the chance to win.

- **Give directly via JustGiving**

Make a one-off or recurring donation through JustGiving:

<https://www.justgiving.com/charity/dormanslandschoolpta>

Your contribution goes straight to the PTA to benefit our students.

- **Shop our Amazon Wishlist**

Help keep our classrooms stocked with essential resources. Visit our Amazon Wishlist:

<https://amzn.eu/ieOfzeqand>

send items directly to the school—it's simple, fast, and impactful.

- **Double your impact**

Many employers offer donation matching. If yours does, contact us at dormanslandschoolpta@outlook.com to maximise your support.

Every action, big or small, makes a real difference for Dormansland School. Thank you for your continued support!

Contact Us!

If you'd like to get in touch to help hold a fundraising event, support us, or sponsor the school in any way, we'd love to hear from you at dormanslandschoolpta@outlook.com. Every penny raised goes directly towards improving the children's learning experience.

With huge thanks,
Dormansland Primary School PTA



**Dormansland
Primary School**

Dormansland Parish Council



As we look ahead to the coming year the Council is seeking to appoint a new councillor. If you feel you have the enthusiasm, commitment, and ideas to make a positive contribution to the life of the village, we warmly encourage you to contact our Clerk for further information.

We are pleased to report that the budget for the forthcoming financial year , 2026 – 2027, has now been agreed at £58,000 for the year. Thanks to careful financial planning, the Council is able to maintain the precept at almost the same level as the previous year with a slight adjustment of £600 (2025–26 £57,400). This reflects our continued commitment to supporting essential services whilst remaining mindful of residents' household budgets.

Several community grants were formally approved during our December meeting making up the second tranche of donations and grants from the annual budget. The Dormansland War Memorial and Community Hall will receive funding to support the completion of their much-needed kitchen refurbishment, a project that will significantly benefit the many groups who rely on the space. In addition, the Council has approved Dormansland Primary School's request for a grant to assist with transport and ticket costs for educational visits to Ashdown Forest, ensuring that pupils can continue to enjoy meaningful outdoor learning experiences.

Councillor Hilary Taylor is coordinating the next village litter pick, scheduled for 26th April 2026. This event has now become a valued annual tradition, helping to keep our village clean, welcoming, and cared for. Please put the date in your diary and look out for further updates. Your participation—however small—makes a real difference and is always greatly appreciated by the community.

One of the priorities identified through our resident's survey was vehicles speeding through the village. It has taken a while, but we are pleased to

report that two new Vehicle Activated Signs (VAS) have been installed, one by the entrance to the rec and one by the Memorial Hall and a gateway sign installed at the Mutton Hill crossroads. Hopefully the combined impact of these measures will be successful in reducing the speed of some of the vehicles through the village. We realise this will not be a total solution to the problem and will be engaging with Surrey to request a traffic survey and taking advice on what further measures may improve safety on our village roads.

District Councillor Sir Nicholas White has raised an important concern regarding the growing number of scams targeting residents in the local area. In response, the Council is sharing the guidance below in the hope that it will help Dormansland residents stay alert, stay informed, and avoid becoming victims of fraudulent activity.

These are specific dangers consumers must watch out for:

Shopping & Product Scams

- **Counterfeit Goods:** Beware of cheap imitations. Counterfeit products are often dangerous and can fund organised crime. Deep discounts on in-demand toys or luxury goods advertised on social media often redirect to cloned websites that look real but deliver nothing. Always buy from trusted sources and consider supporting local, reputable businesses.
- **Dangerous Chargers & Lights:** Shockingly, tests show 98% of counterfeit chargers have the potential to cause electric shock or fire. Always buy Christmas lights and electronic accessories from reputable retailers and inspect older decorations for damage.
- **Illicit Vapes:** The festive flavours may be enticing but avoid purchasing vapes and refill liquids from unauthorized sources, as illicit products may contain harmful substances and inaccurate nicotine levels.

Digital & Communication Scams

- **Social Media Scams:** Be wary of suspicious emails, posts, and advertisements offering unrealistic deals. Fake fundraisers, giveaways, and fraudulent friend requests are common tactics used to steal information.
- **Text Message and email Scams:** Do not click links in unsolicited texts or emails, especially those offering unexpected payments or benefits

(e.g., winter fuel). Other topics may be a missed delivery that asks for a fee to reschedule.

- **Phone Scams (Vishing):** Be cautious of calls from unknown numbers claiming to be from banks, government agencies, or utility companies. Legitimate organizations rarely cold-call seeking sensitive details.
- **Ticket Fraud:** Tickets for events make great gifts, but only purchase them from official, reputable sources to avoid the disappointment of fake or invalid passes.
- **Christmas E-Card Scam:** Malware can be hidden in fake holiday e-cards. Don't open e-cards from unknown senders and be cautious even with familiar senders—accounts can be hacked.

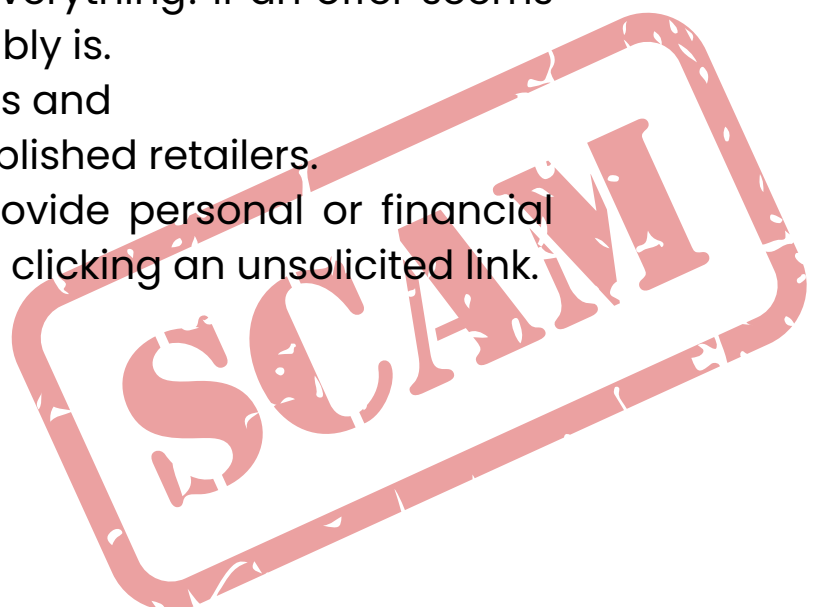
Home & Personal Scams

- **Door-to-Door Sales:** Be cautious of unsolicited visitors selling goods or services. Legitimate businesses rarely cold-call.
- **Insulation Scams:** As the weather cools, beware of unsolicited, high-pressure offers for insulation or home improvement. Rogue traders are active, so research companies thoroughly before agreeing to any work.
- **Romance Fraud:** Those looking for love online must proceed with caution. Do not rush, stay on the platform to chat, and never send money to anyone, no matter their story or need (even for a "Valentine's train fare").

A cautious consumer is a safe consumer!

Consumer Safety Checklist:

- **Stop, Think, Check:** Verify everything! If an offer seems too good to be true, it probably is.
- **Source Wisely:** Only buy gifts and products from trusted, established retailers.
- **Guard Your Data:** Never provide personal or financial details over the phone or by clicking an unsolicited link.



As we start the new year, the Parish Council would like to extend its sincere thanks to all residents, volunteers, and local organisations whose continued support and engagement help strengthen the spirit of our village. Dormansland thrives because of the generosity, involvement, and goodwill of its community, and we remain committed to working collaboratively with you throughout the year ahead. Your ideas, your time, and your voice are always valued, and we look forward to building on this shared sense of purpose as we enter 2026.

The next Parish Council Meeting will be at **6.30pm on Wednesday 4th February** and **Wednesday 4th March 2026**. Planning Meetings begin 30 minutes earlier at 6pm. The meetings are held at the Baptist Church Meeting Room.

Contact us at parishclerk@dormansland.org.uk or telephone 07395 323456 and leave a message. The postal address is PO Box 335, Lingfield, RH7 9BP.

Steven Rees, Clerk

Web. www.dormansland.org.uk



The RH7 History Group's March meeting will take place at the Jennings Hall on **Monday 9th March**. Penny Harris will give a talk called "Potholes, Pigs and Paradise". Doors open at 7:30pm for an 8pm start. There is a charge of £2.50 for visitors to our meetings.

Please note that on our website, www.rh7.org, there are details of our events through the year and 135 factsheets on local history available for you to read for free. If you have any queries on local history, then contact our chairman (rh7histsoc@gmail.com) and one of our team will arrange to meet you at the library.

Bill Stevenson.

www.rh7.org

The Building Known as “The Guest House” in Lingfield

As most of you will know Lingfield Library is housed in a building known as “The Guest House”. It was given this name by Charles Foster Hayward when he purchased the building in 1896. It was his contention that it had been built in 1475 to house guests visiting Lingfield College, which was part of the Collegiate Church rebuilt by Sir Reginald de Cobham in 1431.

Recently Jeremy Clarke, the Chairman of the Hayward History Centre, and I have been assisting Young Epilepsy with their Heritage Square project. The project is intended to refurbish the square bounded by the pond, St Piers Farmhouse, the Granary (Young Epilepsy’s café) and the old carhouse, and to create a research/exhibition centre. As part of his input to the project, Jeremy undertook to carry out historical research on the buildings (he is an expert on medieval buildings). This resulted in him identifying that it was the Sonds family that had owned the buildings when they were constructed. At the time of the construction of the farmhouse (the oldest building) in the 15th Century, this family owned Puttenham Manor (to the east of Lingfield). They also owned many other properties throughout England, including in Lingfield. In Lingfield they owned Town or Church-Stile Farm. The latter name was derived from its farmhouse, which had been built beside the stile immediately to the west of the Church. This stile would have been situated where the path now runs from the graveyard to Vicarage Road. This means that the building we know as “The Guest House” is in fact Church-Stile Farmhouse and the land it stands on was never owned by Lingfield College.

Subsequently we discovered that on the 1720 map of the land owned by Magnus Deo (a copy hangs on the wall of the History Centre in the Library) the building is named as Church-Stile House. It transpires that we have been calling the building by the wrong name for over a century! The Guest House Trust, which is responsible for the building, have been advised of this discovery but have decided against renaming the building as it might cause too much confusion.

Bill Stevenson – Chairman, RH7 History Group. (rh7histsoc@gmail.com)

THE OLD HOUSE AT HOME

JOIN US EVERY WEDNESDAY AT 20:00 FOR OUR PUB
QUIZ - £2.00 ENTRY

WHAT'S ON IN FEBRUARY

Tue 10th ANOTHER DELICIOUS SUSHI NIGHT C/O 'SUESHI' PRE BOOK YOUR FISH OR VEGGIE SUSHI PLATTER NOW!

Fri 13th MAKING THEIR DEBUT AT THE OLD HOUSE AT HOME - LIVE MUSIC FROM THE BENITA JOHNSON BAND @ 20:30. PLAYING A MIX OF WELL LOVED COVERS AND ORIGINAL SONGS

Sun 22nd FAMILY BINGO! A FUN FILLED AFTERNOON OF HILARIOUS BINGO CALLS, PRIZES AND PLENTY OF LAUGHTER FOR ALL. STARTS AT 16:00. £5 FOR 6 GAMES WITH LOTS OF GREAT PRIZES INCLUDING CASH TO BE WON!

JOIN US AFTER THE BINGO FOR OUR MEAT RAFFLE AT 18:00. A CHANCE FOR YOU TO WIN DELICIOUS CUTS AND OF COURSE THE LEGENDARY OXO CUBE!

£2 PER TICKET

Sat 28th JOIN US FROM 20:30 UNTIL LATE WHEN WE WILL BE CELEBRATING OUR 2 YEAR ANNIVERSARY. LIVE MUSIC FROM 'THE AFTERLIFE'

OPEN 7 DAYS A WEEK - SERVING OUR PUB MENU THU-SAT
& OUR TRADITIONAL ROAST EVERY SUN

PLANNING A DO?

WHETHER YOU ARE CELEBRATING A BIRTHDAY, ANNIVERSARY, WEDDING, ENGAGEMENT, CHRISTENING OR JUST A GOOD EXCUSE TO GET EVERYONE TOGETHER, WE ARE HERE TO HELP! WE CAN HELP ORGANISE EVERYTHING FROM LIVE MUSIC TO TAILORED FOOD OPTIONS. NO HIRE FEE! BUFFET FOOD FROM £10PP

OLDHOUSEDORMANSLAND@GMAIL.COM

01342 836828

FACEBOOK - OLD HOUSE AT HOME - DORMANSLAND

INSTAGRAM - OLDHOUSEATHOME_DORMANSLAND

CHARTHAM

FINANCIAL PLANNING

A wealth of expertise on your doorstep

We provide an experienced wealth management and financial planning service offering specialist independent advice in a wide range of areas including:

Investment Planning

Retirement Planning

Inheritance Tax Planning

At Chartham Financial Planning, our client's best interest is at the heart of everything we do. We work with you to build a secure and prosperous future.

Mike Walker DipPFS, Cert CII (MP&ER)

Tel: 01342 891129

Email: mike@charthamfp.co.uk

Website: charthamfp.co.uk

Chartham Financial Planning Limited is an appointed representative of Best Practice IFA Group Limited which is authorised and regulated by the Financial Conduct Authority



VALKYRIE

ELECTRICAL

Dormansland based electrician with over 18 Years in the trade

Covering all Domestic, Commercial & Industrial Projects

Ex Services - Fully Insured - All Work Undertaken

T: 07764 283 235

E: Valkyrie.electrical@gmail.com

Instagram: @Valkyrie.Electrical

Discounts applied to RH7 Postcodes & Ex/ Current Services



Dormans Evening WI “DEWI”

Founded 1964

www.dewi.chessck.co.uk

 DormansEveningWI

theWI
INSPIRING WOMEN

And now for something completely different!

Back in the Spring, as I was walking my dog, I came across an intriguing sight. A group of women trekking towards a footpath. That morning I had been searching online for a Ramblers Group, so I hurried over to them.

“Are you a walking group?”

“We’re the Walkie Talkies!” came the joyful reply.

“The What?” I found out that the Walkie Talkies are the Wednesday walking group of the Dormans Evening Women’s Institute (DEWI). We walked a little way together, chatting about the WI and what had led different people to join, I asked,

“In one sentence, what would you say is the purpose or mission of DEWI?”

“The friendship and education of women.” Was the resolute answer.

Now that sounds like something I want to know more about.

Up until that point I only knew 2 things about the WI.

1. They famously slow-clapped a politician off stage at a conference.
2. One branch did a calendar to raise money for Leukaemia Research which was made into the 2003 film ‘Calendar Girls’.

“Can anyone join?”

“We meet on the 2nd Thursday of every month at 7.30pm in the Parish Rooms – the green building near the church. Why don’t you come along to our next evening, it’s a talk – ‘Find and keep your pelvic floor’ they’re not all like that though!”.

So, I went along, I listened to an engaging and informative talk by Pilates and Ballet Instructor Louise Ryrie, whose warm humour immediately diffused any awkwardness about the topic, and I met a group of

remarkable, interesting, and magnanimous women. I can honestly say DEWI is one of the greatest treasures I have found on a dog walk.

To honour that serendipitous moment, I have written a poem inspired by the 1907 classic "The Teddy Bears' Picnic".

Ode to the DEWI Walkie Talkies

If you go down to the woods today
There just might be a surprise
If you go down to the woods today
You'd be smart to open your eyes

For you might find a brilliant group
Of women walking
And - Cock-a-hoop!
Today's the day you'll meet the
Walkie Talkies

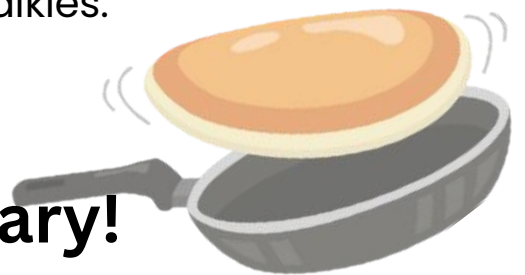
If you go down to the woods today
Or rather on a Wednesday
If you go down to the woods as I say
You'll find a joyful array

Of interesting people witty and wise
They're clever, they're kind,
They're aerobocised!
On Wednesdays you might meet the Walkie Talkies.

Melinda Wells

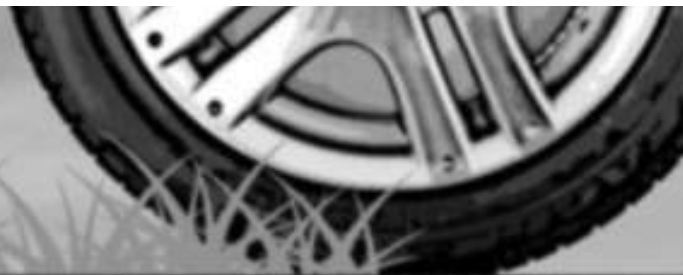
Shrove Tuesday is 17th February!

Shrove Tuesday, or Pancake Day, is the Christian feast day before Lent, historically a time for confession ("shriving") and using up rich foods like eggs, milk, and sugar by making pancakes to prepare for 40 days of fasting, with traditions including confession bells and pancake races. Originating in Anglo-Saxon times, it's the last chance to indulge before the austerity of Lent, leading to festive customs in many cultures, including Mardi Gras. Source: Google! Ed.



PAT's GARAGE

Charlwoods Road, East Grinstead



**Servicing, Diagnostics,
Mechanical Repairs, MOT's, Aircon's,
Tyres, Batteries & Welding.**

FRIENDLY ADVICE & SERVICE

For enquiries please call
Chris Harvey
(01342) 321028 or 301003
Pat's Garage,
Unit 37, Charlwoods Road,
East Grinstead, West Sussex,
RH19 2HG.



Mon - Fri 8:00 - 5:30
Sat 8:00 - 1:00 (MOT's only)



JUST SLEEPERS

Why Choose Us?

We have all types of sleepers in stock and we can supply and deliver to your location.

Common uses include:

- ✓ Creating raised beds
- ✓ Creating steps
- ✓ Used as retaining walls
- ✓ Used as edgings
- ✓ Rustic outdoor furniture
- ✓ Water features
- ✓ As bridges
- ✓ Pergolas



Raised beds made easy.
Please ask us about our
kits or look at our website
for our standard kits.



New Oak Sleeper
100 x 200 x 2400
Softwood Sleepers
100 x 200 x 2400
125 x 250 x 2400



Reclaimed Grade A
German Sleeper
150 x 250 x 2600

For further information please contact Mark on 07702 031741,
email mark@justsleepers.uk or visit our website www.justsleepers.uk



Is your child troubled by
trigonometry?
Or quaking over equations?

Build your child's confidence with
**one-to-one, in person
maths tuition**

Arrange a
half-price taster session

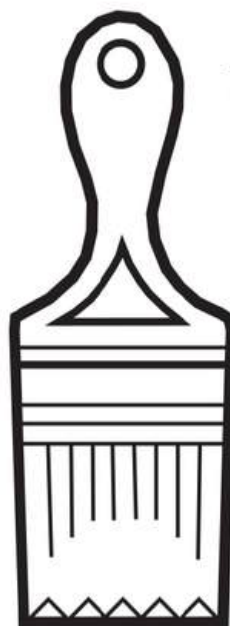
07410 207694

eastgrinsteadmaths@gmail.com

Charlotte Anderson

BA (Hons) Cantab; enhanced DBS checked

Clare Elizabeth



Painting and
Decorating
Services

Reliable
Local
Friendly

0777 532 8781
clareelizabeth100@gmail.com



Dormansland Tennis Club
welcomes new members. Annual
membership is available, and our
club offers junior and adult
coaching and is represented in the
Weald leagues; we welcome
players of all standards.

We have two floodlit courts and our
membership prices are lower than
all other clubs in the area.

See our website for more information:
www.dormanslandtennisclub.co.uk



Oil, Gas and LPG heating
and hot water experts.

Heat pumps, refrigeration and air
conditioning service and breakdown.

Tel 01342 835071
Email info@heatcompany.co.uk
www.heatcompany.co.uk



VIOLIN TUITION FOR ADULT BEGINNERS

**It's never too late to learn a new
skill! So why not give it a try?**

Contact:

ANDREA ATKINSON
BMus

**OVER 25 YEARS
TEACHING EXPERIENCE**

Email: andiviolin@outlook.com

Tel: 07979694901

andreaatkinsonviolin tuition.co.uk



Here to Help

Dormansland Diamonds are still very much here for the community in these difficult times. If you need any help or support, please call or text Lisa in confidence on 07710 917427.

St Peter & St Paul Church,
Lingfield



*Tiny P's
Stay & Play*

For children aged 0-3 years old!
Come and make new friends while your tiny p's
play. Parent/Guardian **MUST** stay with their little
one

Refreshments available

Every Tuesday from 30th September
10am-12pm (Term Time ONLY)
in the Lady Chapel



POP UP SHOP!

THE OLD HOUSE AT HOME PUB, DORMANSLAND

6-9PM

FIRST THURSDAY OF EVERY MONTH



WWW.THETHREEFISH.COM

Dementia 1st

for care & support

Dementia 1st provide Day Care services for people with dementia at Regent House, Horley every Thursday from 10am until 4pm.

Please telephone 01883 818310 for more information and to book your free taster session!

We also host singing groups on the 3rd Thursday of the month at Horley from 10:30 for refreshments, 11am-12pm for singing (£5 pp, carer goes free).

Please check out our website for activities in the area including Oxted & Blethchingley

info@dementiafirst.org.uk

www.dementiafirst.org.uk

Follow us on Facebook!

Registered Charity No. 1172242

Registered Address: The Byre, Pendell Road, Blethchingley, Surrey RH1 4QH



Oyster Picture Framing

Carewell Farm, St Piers lane, Lingfield. RH7 6PN

- Local friendly service
- Creative advice
- Bespoke framing
- Over 25 years experience

Telephone: 01342 833266

Email: martin@oysterpictures.co.uk

Website: www.oysterpictures.co.uk

MR Computing

38 years of combined experience in IT

Local, Professional and Family Owned
business since 2005

NO FIX NO FEE & NO CALL OUT CHARGE

- Punctual visits at an agreed time or collection & drop off service.
- Apple & Windows computer & tablet/phone support for Business & Home
- Reliable wireless range improvement for Home & Business.
- Most work carried out in a one hour visit. Fixed price workshop repairs.
- Repairs, speedup and maintenance, Data transfer/recovery, Computer malware/virus removal.
- New computers supplied/set up and made to feel familiar.



&



Call Mark
& Sue on:

01342 349109

OR

0800 6129534

Email:

office@mrcomputing.net



Website - www.mrcomputing.net

Reviews - mrcomputing.net/reviews



THE 2026 CRICKET SEASON ISN'T FAR AWAY

Come and join your local club!

You might be new to the game, or experienced but looking to play for a club where you're pitched at the right level. Perhaps you want something fun for you and the kids to do. Whatever your motivation, get yourself down to Dormansland CC.

Each week during the Spring and Summer we put out two Saturday league teams and a Sunday XI. We also have a thriving junior section and a recently formed ladies section, with both meeting up on a Thursday. In short, there are opportunities for everyone. And there's more! A lot of clubs stopped doing teas post COVID, but we didn't. Ours just got better and better. So much so in fact, they've even won a couple of awards.

So, if you want to play for a club where you'll receive a warm welcome and every opportunity to shine, get in touch. To find out more, contact Al Murray, Fixture Secretary, on 07932 161392, or email dormanslandccavailability@gmail.com





Safe, Secure & Affordable Dog Walking Field
near Lingfield

£9 per hour

Our beautiful fields are ideal for dogs who like the freedom
to run and enjoy sniffs and smells but maybe sometimes
don't want to go home or deal with others!

www.CarewellCanines.co.uk

contact@carewellcanines.co.uk
01342 886199 / 07968 237702

Carewell Farm, St Pier's Lane, Lingfield, Surrey
RH7 6PN



**Self Storage near Lingfield
with 24/7 access**

320, 160 & 90 sq ft units available from £75 pcm

For enquiries or advice please contact

Charlie Holgate

01342 885 255

07968 237 702

contact@carewellcontainers.co.uk
www.carewellcontainers.co.uk

H2o Plumbing

General Plumbing Services,
alterations & bathroom
installations.

No job too small
C & G trained

Call Richard on
01883 712523 or
07876 450420

SIMMONS DOMESTIC

Repairs—Spares—Servicing

Washing machines, washer dryers,
Tumble dryers, Dishwashers,
Vacuum cleaners, Electric cookers

Bosch washing machine specialist

Established 1978

NO CALL OUT CHARGE

Reliable Engineers, Low Labour Cost

GUARANTEES AVAILABLE



01342 834167

07976 981909

ALEX JONES FUNERAL DIRECTORS

Serving the community since 1996

- OFFERING A CARING AND PERSONAL SERVICE
 - BEAUTIFUL CHAPELS OF REST
 - HOME VISITS AVAILABLE
 - MEMORIAL MASONRY
 - PRE-PAID FUNERAL PLANS
- AN INDEPENDENT FAMILY OWNED BUSINESS

LINGFIELD

1 East Grinstead
Surrey
RH7 6EP
Tel: 01342 832 534

OXTED

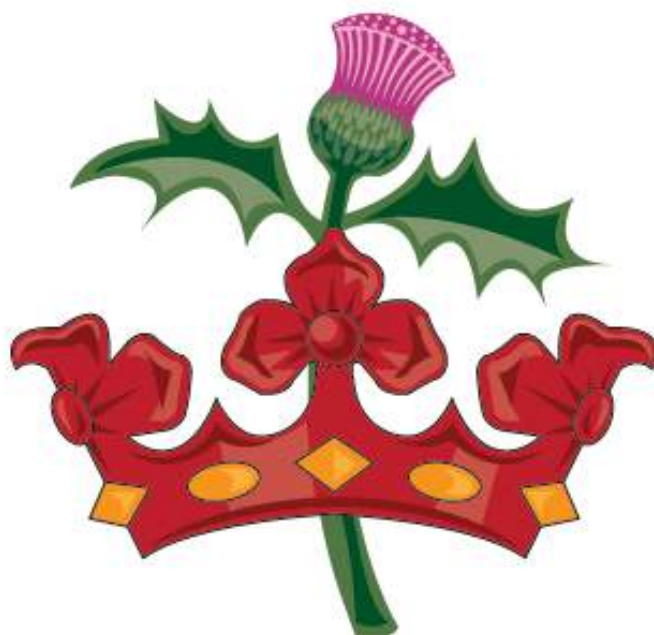
92 Station Road East
Surrey
RH8 0QA
Tel: 01883 730 383

FOREST ROW

1 Ashdown Court
Lewes Road
East Sussex
RH18 5EZ
Tel: 01342 822 399

EDENBRIDGE

70 High Street
Kent
TN8 5AS
Tel: 01732 860 047



Golden Charter 
Smart Planning for Later Life



Alex Jones Funeral Directors Limited is an appointed representative of Golden Charter Limited trading as Golden Charter Funeral Plans which is authorised and regulated by the Financial Conduct Authority (FRN:965279).



We hope the community, and particularly your children, enjoyed the Christmas displays around the village. The little gnomes/gonks are so sweet!

January saw us welcome Delia Taylor who spoke about the life of Coco Chanel – a story from pauper to multi-millionaire! Who knew that after her mother died, she was brought up with her sisters in an orphanage where she learnt to sew. She nearly became a member of the royal family after the Duke of Wellington sent her roses with diamonds inside and asked her to marry him. In her honour if you look on the reverse of any lamp post in Westminster you will see CC the Chanel logo! And how many of you donned an LBD over the festive party season!?

On 10th February we have a fun food & drink based quiz evening including a 'guess the odd ingredient' in bakes provided by some of our members. So, if you think you know your raclette from your rochefort, your gnocchi from pappardelle, why not join us?!



Our Sole Sisters walking group has sampled the wares at Penny's Place after a recent Saturday walk and we're sure to be back!

And our Drama Queen theatre & cinema group have seen Hamnet in East Grinstead and are planning group tickets to see The Unlikely Pilgrimage of Harold Fry – a new musical at the Theatre Royal, and to visit the Ramses and the Pharaoh's Gold exhibition at Battersea Power Station. We like to get out & about!

Our full meeting schedule and more information about our subgroups (which are exclusive and free to all members) are available on our website www.ywidormansland.org.uk.

The YWI Dormansland meets at the Parish Rooms in The Platt at 8pm – 9.45pm usually on the 2nd Tuesday of the month and we always welcome new members. If you are interested in becoming a member, or would like more information, please drop us a line at the email address below. If you have not been a member before your first meeting is free.

Dawn Dulley on behalf of YWI Dormansland



WATT ARE YOU WAITING FOR?

BCM Electrical is a **professional electrical company** who undertake all aspects of electrical work.

- ⚡ Fault finding
- ⚡ Full/partial rewires
- ⚡ EICR/EIC testing and certification
- ⚡ LED lighting and design
- ⚡ Additions and alterations
- ⚡ CCTV
- ⚡ Data
- ⚡ Kitchen/Bathroom wiring
- ⚡ All smart systems including HIVE heating and RING doorbells/CCTV

FULLY INSURED • FULLY QUALIFIED

📞 **07456 411636**

✉ Email: bcmelectricaluk@gmail.com

🌐 Website: www.bcmelectricaluk.co.uk



Puppy & Dog Training!

6 week training & socialisation courses in Lingfield
& Hartfield

For pups under 20 weeks, family friendly, run by
accredited dog trainer!

Private 1:1 training for all ages

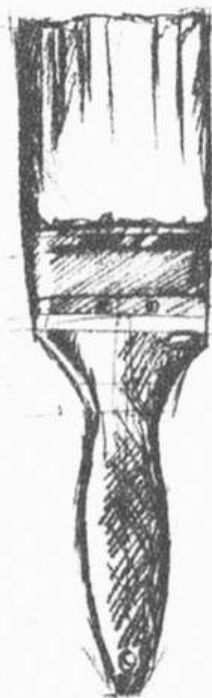


SCAN ME!

07387553234

SARAH@MYCOMPLEXCANINE.CO.UK
[INSTAGRAM.COM/MYCOMPLEXCANINE/](https://www.instagram.com/mycomplexcanine/)
[FACEBOOK.COM/MYCOMPLEXCANINE](https://www.facebook.com/mycomplexcanine)

Peter England Decorating Ltd



- Domestic and Commercial
- Fully insured
- References available
- Free estimates and advice
- All aspects of work undertaken

01342 457 321 • 07743 912 557
peterenglanddecorating@live.com



More dates for your diaries & don't forgets!



Every
Tuesday

Pop-in & chat at the SS Peter & Paul, Lingfield. 10-noon.



Every
Tuesday

Lingfield table Tennis Social Club
Victoria Club, Lingfield. 7-6.30pm.



1st Tuesday
of month

SEND peer support group for parents & carers.
Dormansland baptist church. 10-11.30am.



Every
Wednesday

For secondary school age youngsters.
Scout HQ, Saxbys Lane. 4-6.30pm.



1st Saturday
of month

Breakfast Hub at SS Peter & Paul church, Lingfield.
Bacon rolls etc. 9-10.30am.



2nd Saturday
of month
10am-1.30pm

Repair Cafe East Grinstead. At Glen Vue Community
Hub In Station Road. breathing life back into broken
items and gadgets



3rd Saturday
of month
10am-1.30pm

Repair Cafe Forest Row. At the Community Centre In
Hartfield Road. breathing life back into broken items and
gadgets



3rd Wed.
of month
1.30-3pm

Support group for parents/carers for those with epilepsy
and/or learning difficulties.
St Peter & St Paul's church, Lingfield.



Last Sat
of month
from 12.30pm

A free, simple lunch is offered at St Bernard's
church, Lingfield



Last Tues
of month
from 7.30pm

Wine & Wondering! Spiritual **not** religious!
The Star, Lingfield.



Last Thurs
of month

Age UK Surrey Tea & Chat. 2.30 - 4pm
Jennings Hall, Lingfield & Dormansland Comm. Centre.
Anyone over 50 is welcome



Sunday
8th Feb.

During the 10am service at St John's. We look forward
to seeing you! 2nd Sunday of each month.



Last Sunday
of month

Men's Walks. 10am meet at
Viewpoint Centre in Moons Lane.





From the Editor

Thank you to everyone who contributed to this edition. I'll need to have words with Rev Annie. She mentions Newcastle in her sum up of the year and not Crystal Palace with their two trophy haul! 😂

Lots has been going on in recent months. The new village Youth Hub has opened its doors. The activities provided are very much led by the young people and it's amazing to see how much toast they can tuck away after a busy day at school. We have also welcomed the new Community Café to the village and I wish Nicole every success in her new venture. It's great to see church buildings used on a regular basis.

I took my baby grandson along to the *Little P's Stay & Play* session at Lingfield church today (mid-January) and it was really lovely. Do give it a try if you are a parent/guardian and are free on Tuesday mornings. A lovely warm welcome awaits. Details on the ¼ page ad in this edition.

Copy date for the **March** edition is **Tuesday 17th February**. I look forward to hearing from you about upcoming events or anything you think may be of interest to your fellow residents..

Annie Robinson

editor@dormanslandvillagevoice.co.uk

The views, opinions and updates published in this magazine are those of the content authors and do not necessarily reflect or represent the views and opinions held by the Village Voice. We do our best to check facts wherever possible.

Please Support The Village Voice

If you are able and would like to support the cost of bringing this magazine to your door and ensuring we all stay connected, please scan this QR code to make a donation. Alternately, [email the editor](#), or call St John's Treasurer, John for details of other ways to contribute, thanks.



PREP OPEN
MORNING

SAT 7TH
MARCH 2026

*"From the moment we first visited, we knew it was
somewhere they would thrive."* Current Parent




Lingfield
COLLEGE
PREP

An independent Prep School for
children aged 0 - 11 years.

To book a place, visit our website:
lingfieldcollege.co.uk or call 01342 838153

Dormansland Village Activities and useful numbers

Action Research, Dormansland Committee	Vicky Bown	01732 863950
CARE in East Grinstead and Lingfield (transport to medical appointments is provided by volunteers for those without other means of transport - book between 9:00 am and 2:00 pm)		01342 410086
Carnival Committee College of St Barnabas	dormanslandcarnival@gmail.com Chaplain www.st-barnabas.org.uk	01342 870260
Cricket Club	David Tribe hypernibe@gmail.com	07854 696779
Crimestoppers		0800 555 111
Dormans Evening WI	Karil Greenhalgh www.dewi.chessch.co.uk	01342 832038
Dormansland Baby & Toddler Group	www.tinyurl.com/4wxf6d99	
Dormansland Diamonds  @dormansland diamonds 2020	Lisa Felton Clive Robinson Alison Hills	07710 917427 07432 140892 07846 523226
Dormansland Parish Council Clerk www.dormansland.org.uk	parishclerk@dormansland.org.uk PO Box 335, Lingfield Delivery Office. Gun Pit Rd, Lingfield, RH7 6AR	07395 323456
Dormansland Rockets FC	Russel Foreman	07784 472217
Dormansland Primary School www.dormansland.surrey.sch.uk	Mrs Faye Davies and Mr Mark Cook Acting Head Teachers	01342 832359
Dormansland War Memorial Hall Bookings	Adrienne dwmhtrustees@gmail.com	
Horticultural Society	Tina Boyce	01342 833655
Hospitals: East Surrey Crawley Caterham Dene Queen Victoria		01737 768511 01293 600300 01883 837512 01342 414000
Lingfield & Dormansland Community Centre Lingfield Silver Band Lingfield Surgery	Terri Pagram, Manager Julie Fuller	01342 833893 01342 833400 01342 836327
Meals on Wheels MP for East Surrey Note elections on 4/7)	Sara Watson & Sally Knight Claire Coutinho www.clairecoutinho.com	07504 481289 0207 219 5972
Neighbourhood Watch/COMNET	Geoff Ledden	01342 836775
Parish Room Bookings Police (Surrey)	Anne van Vliet	01342 833183 101

Riding for the Disabled	Pim Ball	01342 870426
Sewing Classes	Cynthia Jones mysewinglessons@gmail.com	07929 878563
South-East Water Emergency Number (24/7)		0333 000 0365
Tanzen Academy (Dance Lessons)	kathy@tanzenacademy.uk	07894 116254
Tennis Club	David Coward www.dormanslandtennisclub.co.uk	07738 195669
Urban Saints (Baptist Church)	David Jackson dbcurbansaints@gmail.com	01342 314738
Little Chums Pre School & Forest School	Julie Duggan www.littlechums.com	07849 308762
YWI Dormansland	Annie Robinson www.ywidormansland.org.uk infoywidormansland@surreyfedwi.org.uk	07798 823115

Churchwardens at St John's

Mr Ray Daines Gatewood, Blackberry Road, Felcourt, RH19 2GH		01342 870358
Helen Lee 32 Dorset Gardens, East Grinstead, RH19 2SD		07876 352245
Parish Treasurer & Envelope Scheme Recorder 11 Pine Way Close, East Grinstead, RH19 4JR	John Pordum pordum@gmail	07711 487178
Messy Church		01342 832391
Child Protection and Safety Officers	Mrs Rosemary Williams Mrs Susan Calamassi	01342 834225 01342 833703
Parish Room Bookings	Mrs Anne van Vliet	01342 833183
Church Flowers	Mrs Josien Yates	01342 832159
Village Voice Editor	Anne Robinson editor@dormanslandvillagevoice.co.uk	07798 823115
Advertising Manager 96 West St, Dormansland, RH7 6QT	Mrs Roz Daly roz.daly2@btinternet.com	07732 711055
Printers: En-route	www.en-route.co.uk	01342 894900

Front cover photograph

Colouring by Mia Brady



To the army of volunteers that make the production & distribution of this magazine possible

Worship at St. John's

www.stjohnsdormansland.org

Sundays

Said Communion (1st, 2nd and 4th Sundays of the month) 8.00am
Family Communion on 1st Sunday, Parish Communion all other
Sundays. Sunday Smilers (children 4-11) meets on 2nd Sunday. 10.00am
Informal Service every Sunday. 5.00pm

Weekdays

Wednesday - Service of Compline on Zoom 8.00pm
Friday - Prayer Time. St Andrew's chapel. 4.00pm

Vicar of Lingfield and Dormansland

The Reverend Ian Whitley 07961 382293

Associate Vicar

The Reverend Annie Kurk 07774 437471
St John's Vicarage, The Platt, Dormansland, RH7 6QU
email: vicar.dormansland@gmail.com

Benefice administrator - officelingfieldppchurch@gmail.com 01342 832021

Centenary Room Bookings - Benefice Office 01342 832021

Dormansland Baptist Church

www.dormanslandbaptistchurch.org.uk

Sunday Morning Service 10.30am

Minister

Rev. Jacqueline Parson dbcminster@gmail.com 07551 493418

St Bernard's Catholic Church, Lingfield

Sunday Morning Service 9.00am

Father Jack Lusted 01342 325705

Claridge House Quaker Meeting

www.claridgehouse.org.uk

Sunday Morning Meeting for Worship 9.45am

Please contact Tony Franklin (barandtony@aol.com) or Lesley
Evans (lesleybcevens@gmail.com) if you'd like to attend.

Resident Friend 01342 832150

Don't use the rest,
instruct the best



We include **PREMIUM**
professional photography



Rated 5 stars for
VALUE for money



NOTHING to pay until the
sale completes



Open **8AM-8PM**
7 days a week



We advertise on
150+ WEBSITES GLOBALLY



We accompany
EVERY viewing

Offices in **Oxted & Sevenoaks** with the strongest coverage in the **TN8** postcode.

(We cover large areas, if you are unsure if we cover you please call us)

Do **NOT** instruct an estate agent until you have spoken to **Platform Property!**

We offer £100 to anyone recommending us a property to sell

keep this flyer and give to anyone you know looking to move – there are no limit of vouchers available!

OXTED & EDENBRIDGE

01883 460373

SEVENOAKS

01732 617212

platformproperty.co.uk

sales@platformproperty.co.uk





35 years

as your independent
local estate agent



01342 837783

lingfield@robertleech.com

Robert
Leech.



EST 1989



01342 459936

www.lingsteadconstruction.co.uk

Home Extensions, Loft & Garage Conversions.

General Building & Maintenance.

Foundations and Groundworks .

Kitchen Alterations and installation.

Driveway construction.

106 West Street, Dormansland, Surrey, RH7 6QT

