

The
**Village
Voice**

**Dormansland
July/August
2026**



**The Create & Care golden roses in the centre of the village.
Thanks to all those that make our village look fabulous!
See letter to the Editor inside.**

ST JOHN'S CHURCH, DORMANSLAND

FUN WITH *Flowers*

SUNDAY 5TH JULY
2-5PM

**TAKE PART: CREATE A LAVISH DISPLAY OF
BLOOMS OR A SIMPLE JAM JAR FULL!
VISIT: COME AND ENJOY THE SPECTACLE
AND VOTE FOR YOUR FAVOURITE.
SEE WWW.STJOHNSDORMANSLAND.ORG
'WHAT'S ON' FOR FULL DETAILS**

CREAM TEAS AVAILABLE

**ALL WELCOME – COME AND
CELEBRATE FLOWERS!**



From Revd Annie

Holidays

July and August means holiday time for many of us in Dormansland.

When I was younger the thing I most loved about holidays or time off was the opportunity to do something different. Swimming in the sea, building the best sandcastles, horse-riding holidays, going on

an adventure – trying new things, seeing new places Later on, holidays were about delighting in seeing my own children try new things and the smiles and laughter of time together. Those were the days when I used to come back from holidays needing a rest!

Now it seems different, I am quite content to sit, sleep and relax into the things I know – and those things now include a trip to Canada to visit my son and his family. I still enjoy seeing different places, but not quite as many all in the same space of time.

Perhaps it is an age thing...or perhaps and I prefer this, it's a new stage of life!

Yet maybe it is about something else. Strictly speaking, it's difficult to find examples of anyone going on 'holiday' in the Bible. Paul took trips, but the missionary journeys were hardly relaxing. Jesus got away for prayer and spiritual refreshment, but those were more like spiritual retreats than modern holidays. David once ignored his military duties in order to spend his afternoons relaxing, but that led to his committing adultery and murder—hardly a positive biblical instance of holiday!

So how we should view it is this – the Bible provides a basis for times of rejuvenation. Firstly, God built cycles of rest into the order of the creation, marking one day each week to be spent away from work. Beyond that, annual festivals on the Jewish calendar provided for extended rest and recreation. The author of Ecclesiastes rightly called his readers to the pleasures of life: *“Go, eat your bread in joy, and drink your wine with a merry heart, for God has already approved what you*

do" Ecclesiastes 9:7. The Lord has sanctioned recreation; there is no need to feel guilty for times focused on enjoyment—this is part of God's plan.

Rather than thinking of time away, perhaps we should reclaim the term 'holiday' (from 'holy day'). Maybe the emphasis should fall on spiritual reorientation and refreshment in order to tackle our work.

In the novel Moby Dick, Herman Melville gave us a good example of the need for rest in order for our work to be effective. Before the whalers realised this principle, the poor harpooner would have to row along with his colleagues in a boat pursuing the whale. But by the time they reached it, he was exhausted and therefore found it impossible to spear the whale with accuracy and strength. They finally decided he should ride while the others rowed, so that when the time came, he could do his job with good effect. Though he rested, it was as a means to an end and not as an end in itself. Possibly not a good example to quote though as whaling is completely against my principles!

Of course I recognise that I am incredibly fortunate to be able to take time off and to be able to have a holiday, for many in this country and abroad are not so fortunate. So in my rest, I look for purpose.



Hazel & friends relaxing & resting

Upon our return from time off or even a holiday, let's pray that we will be ready, equipped and keen to serve, love and live for Jesus and make Him known in Dormansland and beyond.

With every blessing as you rest

Rev Annie

Vicar.dormansland@gmail.com

TUESDAY 28TH JULY

3.30-5PM

CENTENARY ROOM, ST JOHN'S CHURCH,

A SNACK IS PROVIDED.

**STORIES & ACTIVITIES WITH A BIBLICAL THEME
FOR CHILDREN AGED 3-11 & THEIR PARENTS/CARERS**

CHILDREN MUST BE ACCOMPANIED BY AN ADULT

NOTE. There is no Messy Church in August

St Peter & St Paul, Lingfield

Choral Evensong

Sunday 5th July. 4.30pm

**Join them for with music to celebrate
their patronal festival**



But be sure to come to Fun with Flowers at StJ first! 😊 Ed.



Just a little reminder

**From July 2026 the
rhythm of services at
St John's will change
slightly:**

1st Sunday of the month

8am BCP Service of the Word

9am Bubble Church (puppets, stories and fun and games)

10am Holy Communion (Activity packs for children)

5pm The Five - informal service



2nd Sunday of the month

8am BCP Communion Service

10am All Age Communion (children help to lead the service)

5pm The Five - informal service

3rd Sunday of the month

8am BCP Communion Service

10am Holy Communion (Sunday Smilers for children)

5pm The Five - informal service



4th Sunday of the month

8am BCP Communion Service

10am Holy Communion (Parachute Prayers for children)

5pm The Five - informal service

5th Sunday of the month

8am BCP Communion Service

10am Holy Communion (Activity packs for children)

5pm The Five - informal service

RAKE AND CAKE ANYONE?

**SATURDAY
4TH JULY
10AM – 12
NOON**



St John's Church needs your help!

Last year you helped us to repair the damage caused by vandalism AND prepare the church garden for the winter...

This year we need your help again, preparing the church garden for Summer

YOU BRING: Hand tools, trowel, fork, secateurs, rake etc gloves, wellies if wet, a plant for the garden, children and/or dog!

WE PROVIDE: CAKE CAKE CAKE CAKE and tea/coffee/squash!

Dormansland Baptist Church Community Hub

Fridays
10-2pm



*Tea, coffee, cake
and light lunches
available.*

*Offering a calm and warm environment for you to come sit,
work, read, relax or knit etc.*

Lingfield & Dormansland Community Centre

☀️ **While Everyone's on Holiday... We're Open All Summer!** ☀️

- ✓ A variety of **classes and activities** for all
- ✓ **Affordable room hire** for meetings, events, or get-togethers
- ✓ Convenient **printing and photocopying services**
- ✓ Free **IT Drop-In** on the last Thursday of the month
- ✓ A warm, welcoming space right in the heart of Lingfield

Whether you're planning a party, need a quiet place to work, or just want to meet new people — we're here for you.

Visit us at www.lingfieldcentre.org ; call 01883 833893
or email enquiries@lingfieldcentre.org to find out more



Dormansland Parish Council



The Parish Council held another lively Full Council Meeting on the 3rd June 2026. We met at the War Memorial Community Hall. We were pleased to be joined by several members of the public who came to take an interest in how the Council manage village affairs.

There are still two vacancies on the Parish Council and we would be delighted to get applications from interested residents who would like to join us. All the current Councillors find it extremely interesting and enjoy being able to make improvements to the geographical area of Dormansland. If you are interested in being a Councillor, please contact our Parish Clerk for more details and an application form.

We were delighted to hear that the playground will get a full refurbishment during the summer. It will have a range of play equipment and be accessible to all. It will have a purpose made surface which will make it more useable in the wetter months. We are really looking forward to the new play facilities which we have been discussing for some time. The company who will be installing the playground advise that the work should be done during the summer, when there is less chance of rain. The ground in the recreation ground can get very waterlogged in the Autumn and this could impact on the laying of the hard floor. For this reason, the work is likely to take place during July and August, which we recognise is far from ideal, but we need the ground to be laid in optimum conditions.

The Parish Council discussed the proposed housing development on the Farindons land and agreed to seek specialist help to advise us when more information about the development becomes available.

We are in discussion with Lingfield Parish Council about the allotments. As there are no allotments in Dormansland, our residents are entitled to apply to use the allotments in Lingfield. We pay £500 each year from the parish budget to Lingfield Parish Council towards the cost of

maintaining the allotments. In the past few years, we have paid an additional amount for a new gate and to have some hedging cut back. We have insufficient information about how many Dormansland residents currently use the allotments and so we have asked for clarification about this.

Dates of upcoming Meetings at Dormansland War Memorial Community Hall – Jubilee Room. Note no meetings in August. All welcome:

- Planning Meeting. **Wednesday 1st July at 18.00**
- Full Council Meeting. **Wednesday 1st July at 18.30**
- Planning Meeting. **Wednesday 2nd September at 18.00**
- Full Council Meeting. **Wednesday 2nd September at 18.30**

Steven Rees, Clerk

Dormansland Parish Council – working together for our village.

ALLENBY		COACH HIRE	Pick up points from Edenbridge, Marsh Green, Dormansland, Lingfield, Blindley Heath and South Godstone.
Welcome to our Days Trips departing in your area			
Tuesday 7 July	A day at Faversham	£26pp	
Monday 13 July	A day at Broadstairs or Margate	£26pp	
Friday 17 July	A day at Winchester	£26pp	
Tuesday 21 July	A day at Whitstable	£26pp	
Wednesday 29 July	A day at Herne Bay	£26pp	
Monday 3 August	A day at Bexhill or Hastings	£26pp	
Thursday 6 August	A day at Canterbury	£26pp	
Tuesday 11 August	A day at Deal	£26pp	
Friday 14 August	Eastbourne Airshow	£28pp	
Wednesday 19 August	A day at Salisbury	£27pp	
Monday 24 August	A day at Southend	£27pp	
Thursday 27 August	A day at Worthing	£26pp	
Tuesday 1 September	RHS Wisley Flower Show & Gardens	£43pp (RHS Members £26pp)	
Monday 7 September	Batemans, Sussex	£44pp (NT Members £26pp)	
Friday 11 September	A Day at Brighton	£26pp	
Wednesday 16 September	St Albans on Market Day	£28pp	
Thursday 24 September	Michelham Priory, Sussex	£38pp	

**BOOK
NOW**

FRIDAY 20 NOVEMBER - BRICKLANE SPECIAL NEW FOR 2026

CHRISTMAS WONDERLAND MUSICAL INCLUDING AFTERNOON

enquiries@allenbycoachhire.co.uk
Tel: 01883 330095
www.allenbycoachhire.co.uk

Lingfield Marathon Minibus Shopping Trips.

Upcoming shopping trips are:

July

- Friday 3rd. Sainsburys. East Grinstead.
- Friday 10th. Morrisons, Oxted.
- Friday 17th. Tesco, Three Bridges.
- Friday 24th. Waitrose. Horley.
- Friday 31st. Sainsburys. East Grinstead.

August

- Friday 7th. Morrisons, Oxted.
- Friday 14th. Tesco, Three Bridges.
- Friday 21st. Waitrose. Horley.
- Friday 28th. Sainsburys. East Grinstead.



Suggested donation per trip is £3. Call Scott on 07710 269369 to book your place.



**National
Emergency
Briefing
on Climate
& Nature**



Thursday 9th July, 7:45pm at
Jubilee Community Church,
East Grinstead.

Free local screening of a film
presented by **Chris Packham** on
the **threats to British life from
ongoing damage to nature and
to our climate.**

Here is a Booking Link:
www.buytickets.at/jubileecommunitychurch/2210216
or use this QR code.

THIS MY
THEATRE

Alice's Adventures in WONDERLAND

**ST JOHN THE EVANGELIST CHURCH
DORMANSLAND**

4th August, 2pm
thisismytheatre.com

Book Tickets



07732 253311 | Please book in advance





Garden open for charity

Woods Folly

Ford Manor Road
Dormansland
RH7 6NZ.



Saturday 11 July 10.30am - 4.30pm

Adults £7, Children free
Tea, coffee & cake

Pre-booked tickets only

Visit ngs.org.uk or use QR code



Sundays 19th July & 16th August

During the 10am service at St John's. We look forward to seeing you!



SOURDOUGH, BREADS & PASTRIES

DELIVERED TO YOUR DOOR WEEKLY



BAKERY

- Freshly baked to order
- All handmade
- Saturday morning delivery
- Delivery areas: Dormansland, Lingfield & surrounding areas
- Preorder available at www.tinloafbakery.com/menu

CATERING

- Private & corporate
- Cakes & pastry boxes
- Tea parties & events
- Gifts (wedding, corporate, special occasions)



TINLOAF_BAKERY

Get in touch for any questions, to discuss a quote or to order!

hello@tinloafbakery.com
www.tinloafbakery.com
Whatsapp: 07456643709
FB: Tin Loaf Bakery



Introducing 'Penny's Chat Table'

Myself and Penny have noticed more and more members of this community that pop in for lunch or a coffee, by themselves, and would love some company or to have a chat with someone new. With so many coming at different times/days, we felt it would be great to dedicate one specific day and time that's open to anyone that wishes to sit at our 'chat table' to have lunch if you wish, a delicious coffee and of course chat.

The "chat table" is set up here in Penny's Place on Mondays at 11am. You can come and go as you please, but just know each Monday for the foreseeable future there will be a table here for anyone who simply wants some company. This is open to all our community and surrounding neighbours, so tell your friends and of course anyone you might think would be interested.

Hopefully see you Monday 🤗

Nicole



Opening hours:
Monday to Friday. 9am - 4pm
Saturdays. 8pm - 2pm



**Find us in the Centenary
Room behind St John's
church**

Remembering Barbara Marks (nee Kirkham)

With a long history in Dormanland, Graham asked that we include a memorial piece for Barbara – a much-loved wife, mum, grandmother, great grandmother, Sister, auntie and friend.

Barbara was born in Chelwood Gate and later moved to Dormansland. She was a farmer's daughter, and that country upbringing stayed with her throughout her life. She went to Notre Dame Convent School, and from an early age she had the strength, humour and character that everyone came to know so well.



Barbara met Graham while he was doing his National Service at Hobbs Barracks. The story of how they met is brilliant. Graham had somehow lost a tank and was ringing around the barracks trying to find out where it had gone. In those days, phone calls went through a telephone exchange, and Barbara was working there. That call led to Graham asking her out on a date.

Their first date was simple but special. They spent an hour walking around Lingfield, where Barbara worked. But from that walk, a lifelong love story began.

Barbara and Graham were married in St John's church on St Patrick's Day, 1962. They later bought a house in Larkfield, Kent, where their first child, David, was born, followed by Alison.

After Larkfield, they lived for a while in a caravan on Barbara's dad's farm while they searched for a house in the area.

In 1969, the family moved to Lingfield. Barbara found the house, Burnie, while out on a drive with her brother Joe. That house became the family home, and in 1972, their third child, Johnathan, was born there.

Then, in 1973, Barbara suffered a cerebral vascular accident during an operation. She was left only able to move her shoulder and cough. But anyone who knew Barbara would know that this was never going to stop her.

Barbara went through 15 major operations, but she kept going with amazing courage and determination. At the time, Graham was left with three young children, and there was talk of the children being placed in foster homes and Barbara going into a home. But Barbara and Graham were not having that. Together, they kept their family together. And that really says so much about them both.

Barbara's courage was incredible. But what made her so special was not just that she survived hardship – it was the way she lived despite it. She remained positive, funny, strong-willed, and full of character. S

She and Graham were involved in lots of charity work over the years. Barbara always took part in the Lingfield Marathon Fun Run, and of course, she always won the wheelchair category. She loved riding horses with Riding for the Disabled, and she enjoyed swimming with the Flamingos Swimming Club in East Grinstead.

Barbara also had a wonderfully mischievous side. We were recently told a story about how she used to hide the carers' phones under her arm. She thought this was hilarious – and it is exactly the sort of thing Barbara would do.



Another story that made friends & family laugh was something she said recently about Graham. Graham had been a long-serving local parish councillor, and when one of her sons asked, "Did you vote for him?" Barbara replied, "Oh no." That was Barbara – quick, honest, and funny.

Barbara and Graham shared a long and devoted marriage. In 2022, they celebrated 60 years of marriage and received a letter from Queen Elizabeth II, congratulating them on their diamond wedding anniversary. It was a very special recognition of a marriage built on love, loyalty, strength and humour.

Barbara was one of a kind. She was brave, funny, determined, and deeply loved. She gave so much to her family and to the people around her.

She will be missed more than words can say, but she will never be forgotten.

Graham Marks

The East Grinstead Art Society (EGAS) Exhibition



Our Society will be holding the annual Art Exhibition at Glen Vue, Railway Approach, East Grinstead 30th July until 13th August. This is open during the day with Stewards but can also be seen whenever the Centre is open. There are paintings to see and buy and also prints and greetings cards.

Our next demonstration at the Meridian Hall will not be until 9th September.

Kate Chadwick. EGAS Secretary



Curiosity Respect
 Responsibility
Dormansland
PTA



THANK YOU!

A huge thank you to our wonderful village community for your **amazing support** and **generous donations** this year. Together, we have raised an incredible amount, which has helped us make a **real difference** for our children.

THANKS TO YOU, WE HAVE BEEN ABLE TO FUND:



SCHOOL CHAIRS for every classroom.



SUBSCRIPTIONS to TT Rockstars and Bug Club.



WORKING TOWARDS a new inclusive picnic table for all to enjoy.



A NEW SCREEN for the school aquarium.



LAPTOPS to support learning across the school.



50% OF FOREST SCHOOL FEES helping our children enjoy and learn from the outdoors.

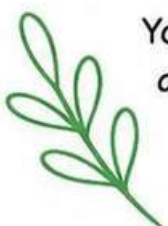


AND MANY MORE THINGS... big and small, that make school life brighter for our children.

Your kindness helps create more opportunities, better resources and happy memories for every child at Dormansland Primary.

THANK YOU FOR BELIEVING IN OUR SCHOOL AND SUPPORTING OUR CHILDREN!

Curiosity. Respect. Responsibility.
Stronger Together.





Here to Help

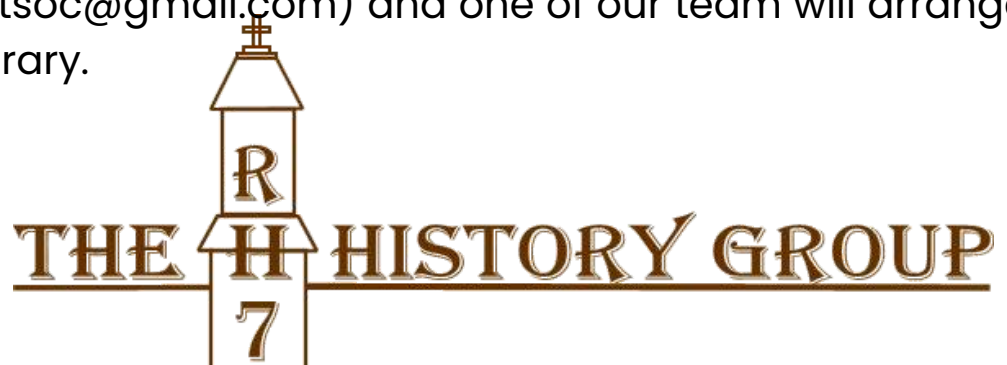
Dormansland Diamonds
are still very much here
for the community in
these difficult times. If you
need any help or support,
please call or text Lisa in
confidence on
07710 917427.

Next Meeting of the RH7 History Group

The RH7 History Group's March meeting will take place at the Jennings Hall on **Monday 13th July**. Sue Macdonald will give a talk called "The Haywards and the Guest House". Doors open at **7:30pm** for an 8pm start. There is a charge of £2.50 for visitors to our meetings.

Please note that on our website, www.rh7.org, there are details of our events through the year and 135 factsheets on local history available for you to read for free. If you have any queries on local history, then contact our chairman (rh7histsoc@gmail.com) and one of our team will arrange to meet you at the library.

Bill Stevenson.
www.rh7.org



Lingfield Community Mini Bus

Our community mini bus goes from strength to strength - it is great that it is getting used by more groups ! From our weekly Friday morning shopping trips to taking staff and students from Hever Primary School to Edenbridge for swimming lessons and additional field trips, Lingfield Marshall Arts, Lingfield Scout Group, Jubilee Community Church in East Grinstead, Greathed Manor Care home, Lingfield Sport Club Cricket teams, Lingfield Running Club, Edenbridge and Oxted show, they are all making great use of our mini bus.

The Ladies who are taken on a door to door service every Friday for shopping have been to Denbies Vineyard and have also a day trip to Eastbourne.

To maintain this great community asset, **we could really do with another volunteer driver**. This doesn't need to be every week, it could be once a month or even once every 2 months but we need a little bit of help so if interested, please contact me.

A reminder that on **Sunday 12th July, 2-5pm** in St Peter and St Paul's Church in Lingfield we are having a **coffee afternoon** to raise some funds to keep the mini bus on the road. Everyone is welcome and if anyone wants to help with making drinks and clearing up, or donate a raffle prize, please contact me.

Friday 23rd October 2026, 7.30pm will see our annual quiz night held in the Victoria and Sports Club in Lingfield. It's £30 for a team of up to 6 to enter, it promises to be a great opportunity for our community to come together so please contact me if interested in putting a team together.

Many thanks, Scott McDonald
07710 269369.



DORMANSLAND CRICKET CLUB



NOW RECRUITING NEW PLAYERS FOR THE 2026 SEASON

- ✓ FRIENDLY & WELCOMING CLUB
- ✓ SATURDAY LEAGUE CRICKET
- ✓ SUNDAY FRIENDLY MATCHES

FREE JUNIOR COACHING!

NEWLY FORMED WOMENS TEAM!

JOIN US AT ST. CLAIR CRICKET GROUND
Station Road, Dormansland, Surrey RH7 6NL

INTERESTED? GET IN TOUCH:

 www.dormanslandcricketclub.weebly.com

 JoinDormanslandCC@gmail.com

 07932 161392



Neighbourhood Watch Update



Latest available reported crime between 7th May and 17th June 2026. Please remember these statistics are only as good as the information received so please report any crimes to ensure both an accurate reflection but also greater support from Surrey Policing for our village

Five crimes has been advised via the Tandridge Neighbourhood Watch Newsletter for Dormansland/Dormans Park during this 6 week period.

Vehicle Crime

Station Road, Dormansland – Theft. Between 14th & 17th May a black Nissan Navara index DS20MDE was stolen.

Racecourse Road, Dormansland – Theft. Between 20.30 on 20th May and 08.45 on 31st May three motorcross bikes were stolen from a hotel car park. One of the bikes was a red Beta 390 RR index MBKF153.

Descriptions of the others awaited

Station Road, Dormansland – Criminal Damage. Between 24th and 27th May suspected catapult damage was caused to windows and bodywork of a car.

Burglary Business and Community

St Piers Lane, Dormansland. Overnight 28th to 29th May the Georgian wire window to the left of the entrance door of a sports hall was smashed and the building was entered but nothing stolen.

Memorial Hall, Plough Road, Dormansland. Around 22.00 14th June the door was damaged when three male suspects entered the building. A short time later two males were arrested on suspicion of burglary following reports of a break in at a block of flats under construction close by. One male was also arrested on suspicion of possession of cannabis

Please join the Neighbourhood Watch community as additional information is shared, providing guidance on how to secure your property, scams etc, which are all very useful.

Clive Robinson

One of your Neighbourhood Watch Coordinators



Dormansland Youth Hub meet with Playground Designer!



Nicci Aplin from Kompan met with our youngsters on behalf of Tandridge DC.

I attended Dormansland Youth Hub to deliver a creative engagement session with local young people linked to the new playground development. While the group was lively, they were highly engaged throughout, contributing valuable insight, feedback and ideas 😊

Session Overview

The session began with an introduction to KOMPAN, explaining my role and how we design and deliver play spaces. I shared visuals of previously delivered projects to help bring the concepts to life.

This developed into an interactive discussion where the group explored:

- What they like and dislike about existing playgrounds
- What they feel is missing for their age group
- How spaces can feel inclusive, welcoming and relevant to them

The group showed particular interest in the KOMPAN Design Institute, including the research, engineering and testing behind our products. They responded especially positively to our focus on sustainability and inclusive design, highlighting that these aspects were important to them.



Play Value & Innovation

We explored a range of play opportunities for older children and watched some videos! Search *Kompan Orbit* & *Kompan Cliff Rider* into a search engine to see what the children watched.

The Cliff Rider generated significant enthusiasm, with strong reactions from the group and clear engagement with more challenging, dynamic play opportunities. I was asked if I could get one in the next playground and I said I would do my utmost 😊

Anti-Social Behaviour (ASB) Discussion

A key theme raised by the group was concern around anti-social behaviour and potential damage to equipment. This prompted a discussion about:

- The durability and robustness of KOMPAN equipment
- Designing for longevity and high-use environments
- The importance of community ownership in protecting spaces

The group engaged well with the idea of working collaboratively to care for the space, and showed strong interest in the inclusion of positive words of affirmation within the design as a way of encouraging positive behaviour – we chose our favourites below and the children also came up with their own



Creative Activity

The session then moved into a hands-on creative activity. While the original brief was to design a banner, the session evolved organically, with participants choosing to design their own pieces of playground equipment as well as creative concepts for the space.

We also explored:

- Positive words of affirmation that could be embedded within the play area
- Ideas to promote inclusion, community and shared use
- Engagement remained strong throughout, with participants enthusiastic about contributing their ideas and seeing these reflected in the final development.

Ongoing Engagement & Next Steps

To continue engagement beyond the session:

- Participants will receive goodie bags in recognition of their involvement
- They have been invited to design a poster to promote the playground opening
- A prize will be awarded for the best entry, with potential for designs to be used as part of event materials

Outcomes

The session successfully:

- Engaged local young people in a meaningful and positive way
- Gathered valuable feedback on play value, inclusivity and preferences
- Identified local concerns around anti-social behaviour and community use
- Increased understanding of sustainable and inclusive play design
- Created a sense of ownership and pride in the future playground

Overall, the session was a great success and a great insight into user needs and allowed young people to actively contribute to the project, reinforcing the community-led approach to the playground design and we hope to see them at the opening!

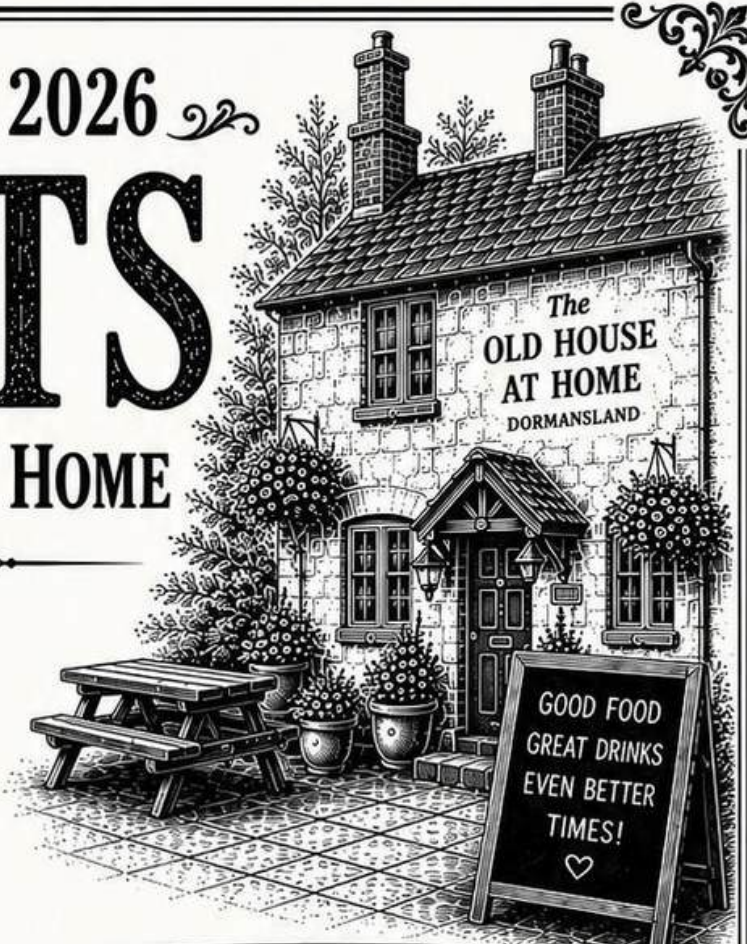
Nicci Alpin

JULY & AUGUST 2026

EVENTS

AT THE OLD HOUSE AT HOME

◆ DORMANSLAND ◆



JULY 2026

4
JULY

SAUSAGE DOG MEET UP

2pm
Bring your sausage dog for a fun afternoon!



10
JULY

RUM & REGGAE NIGHT

From 7pm
Live steel pan music from Melodic Panman
Caribbean food



29
JULY

CHARITY QUIZ NIGHT

8pm
Fun for everyone
Great prizes to be won!
Winner chooses charity



31
JULY

BLUES & ROOTS NIGHT

From 8.30pm
Live music with Dave Beckett



AUGUST 2026

14
AUG

LIVE MUSIC - JASON LINES

From 8.30pm
An evening of great live music



29
AUG

LIVE MUSIC - SWING N KING

From 8.30pm
Mark & Del return for a musical celebration of Swing and Elvis



31
AUG

SUMMER BBQ

12pm - 4pm



?

WEEKLY FAVOURITES - QUIZ NIGHT

Every Wednesday, 8pm

Cash prizes for 1st, 2nd and 3rd places

?



CALL TO BOOK:

01342 836828

✉ oldhousedormansland@gmail.com



?

PRIVATE EVENTS

Birthdays • Weddings • Anniversaries • Christenings • Wakes • And more

Ask our team for more information

?

CHARTHAM

FINANCIAL PLANNING

A wealth of expertise on your doorstep

We provide an experienced wealth management and financial planning service offering specialist independent advice in a wide range of areas including:

Investment Planning

Retirement Planning

Inheritance Tax Planning

At Chartham Financial Planning, our client's best interest is at the heart of everything we do. We work with you to build a secure and prosperous future.

Mike Walker DipPFS, Cert CII (MP&ER)

Tel: 01342 891129

Email: mike@charthamfp.co.uk

Website: charthamfp.co.uk

Chartham Financial Planning Limited is an appointed representative of Best Practice IFA Group Limited which is authorised and regulated by the Financial Conduct Authority



Reiki Reality **Becky Read - Reiki Master**



'Rei' (pronounced Ray) = 'Universal Life Force'
And 'Ki' (pronounced Key) = 'Energy'.

Reiki promotes Self-Healing

***Working for our
Highest Good***

***Physical, Mental, Emotional
and Spiritual Levels***



**Contact me directly to book at
one of these Locations:**

- **Claridge House**
Lingfield / Dormansland RH7
- **My Happiness Hub**
Godstone Green RH8

Or you can also contact me for:

- **Home Visits**
- **Distance Reiki** over Zoom



www.reikireality.co.uk





Dormans Evening WI “DEWI”

Founded 1964

www.dewi.chessck.co.uk

 DormansEveningWI

theWI
INSPIRING WOMEN

At our June meeting Dr Jay Woolgara told us of “The Indian Diaspora” and how he worked hard to find a new life in England.

In July DEWI members will visit local gardens enjoying tea and cakes in the sunshine. They will also have shared a summer evening meal together at a local pub.

At our August meeting, **Thursday 13th August**, DEWI members will hear Jackie Simmonds tell us about life at The London Palladium as an Original Tiller Girl. Visitors and new members are welcome .

DEWI members are also going to share a picnic at Hever Castle and see a production at The Last Night at The Proms.

Our monthly meetings are held at The Parish Room, The Platt, Dormansland RH7 6RA on the second Thursday in the month at 7.30pm. Do come, you will very welcome as a visitor or a new member.

As well as our monthly meetings we have games nights, book clubs, country walks, coffee meet-ups and a theatre and film clubs.

For further information please contact Karil Greenhalgh 01342 832038 or check out www.dewi.chessck.co.uk



Margaret Blake



June has been a busy month! We welcomed Mary & Mercy who gave a fascinating insight into their adventures in Uganda.

Then had our fundraising fete in the Memorial Hall – welcoming everyone to come and find some good bargains and have a drink and a slice of cake with us – a successful day all round.



In July, we are bringing some colour to our house or gardens and painting some terracotta pots which should be fun.



August sees us arranging our annual ramble walk ending up in a local pub with drinks to finish the evening.

At our September meeting we will have a talk about MGM Musicals. Glamorous and entertaining.



In addition to our monthly meetings, we have two thriving book groups, organise regular theatre & cinema trips and our Sole Sisters walking groups stride out on local footpaths,

Our full meeting schedule and information about the sub groups can be found on our website. www.ywidormansland.org.uk

YWI Dormansland meets at the Parish Rooms in The Platt at 8pm – 9.45pm usually on the 2nd Tuesday of the month and we always welcome new members. If you are interested in becoming a member, or would like more information, please drop us a line at the email address below. If you have not been a member before your first meeting is free.

Marion Hornall on behalf of YWI Dormansland
email: infoywidormansland@surreyfed.org.uk

PAT'S GARAGE

Charlwoods Road, East Grinstead



**Servicing, Diagnostics,
Mechanical Repairs, MOT's, Aircon's,
Tyres, Batteries & Welding.**

FRIENDLY ADVICE & SERVICE

For enquiries please call
Chris Harvey
(01342) 321028 or 301003
Pat's Garage,
Unit 37, Charlwoods Road,
East Grinstead, West Sussex,
RH19 2HG.



Mon - Fri 8:00 - 5:30
Sat 8:00 - 1:00 (MOT's only)



JUST SLEEPERS

Why Choose Us?

We have all types of sleepers in stock and we can supply and deliver to your location.

Common uses include:

- ✓ Creating raised beds
- ✓ Creating steps
- ✓ Used as retaining walls
- ✓ Used as edgings
- ✓ Rustic outdoor furniture
- ✓ Water features
- ✓ As bridges
- ✓ Pergolas



Raised beds made easy. Please ask us about our kits or look at our website for our standard kits.



New Oak Sleeper
100 x 200 x 2400
Softwood Sleepers
100 x 200 x 2400
125 x 250 x 2400



Reclaimed Grade A
German Sleeper
150 x 250 x 2600

For further information please contact Mark on 07702 031741,
email mark@justsleepers.uk or visit our website www.justsleepers.uk



East Grinstead
MATHS TUITION

Is your child troubled by
trigonometry?
Or quaking over equations?

Build your child's confidence with
**one-to-one, in person
maths tuition**

Arrange a
half-price taster session

07410 207694

eastgrinsteadmaths@gmail.com

Charlotte Anderson

BA (Hons) Cantab; enhanced DBS checked



DLTC
DORMANSLAND TENNIS CLUB

Dormansland Tennis Club
welcomes new members. Annual
membership is available, and our
club offers junior and adult
coaching and is represented in the
Weald leagues; we welcome
players of all standards.

We have two floodlit courts and our
membership prices are lower than
all other clubs in the area.

See our website for more information:
www.dormanslandtennisclub.co.uk



**The salon on the High Street is
under new management!**

An introduction to their staff &
services will feature in the
September edition
but in the meantime,
contact Katy for more details.

Phone: 01342 619130

Mobile: 07983 870564

**Email: [houseofhairdormansland
@hotmail.com](mailto:houseofhairdormansland@hotmail.com)**



**Oil, Gas and LPG heating
and hot water experts.**

**Heat pumps, refrigeration and air
conditioning service and breakdown.**

Tel 01342 835071

Email info@heatcompany.co.uk

www.heatcompany.co.uk



WINE & WONDERING!

OTHER DRINKS ALLOWED!

SPiritual **NOT**
RELIGIOUS

Last Tuesday of every
month

7:30pm at The Star Inn
28th July

Check with Rev Ian re August



Oyster Picture Framing

Carewell Farm, St Piers lane, Lingfield. RH7 6PN

- Local friendly service
- Creative advice
- Bespoke framing
- Over 25 years experience

Telephone: 01342 833266

Email: martin@oysterpictures.co.uk

Website: www.oysterpictures.co.uk

MR Computing

38 years of combined experience in IT

Local, Professional and Family Owned
business since 2005

NO FIX NO FEE & NO CALL OUT CHARGE

- Punctual visits at an agreed time or collection & drop off service.
- Apple & Windows computer & tablet/phone support for Business & Home
- Reliable wireless range improvement for Home & Business.
- Most work carried out in a one hour visit. Fixed price workshop repairs.
- Repairs, speedup and maintenance, Data transfer/recovery, Computer malware/virus removal.
- New computers supplied/set up and made to feel familiar.



&



Windows

Call Mark
& Sue on:

01342 349109

OR

0800 6129534

Email: office@mrcomputing.net



Website - www.mrcomputing.net
Reviews - mrcomputing.net/reviews



Safe, Secure & Affordable Dog Walking Field
near Lingfield

£9 per hour

Our beautiful fields are ideal for dogs who like the freedom
to run and enjoy sniffs and smells but maybe sometimes
don't want to go home or deal with others!

www.CarewellCanines.co.uk

contact@carewellcanines.co.uk
01342 886199 / 07968 237702

Carewell Farm, St Pier's Lane, Lingfield, Surrey
RH7 6PN



Self Storage near Lingfield
with 24/7 access

320, 160 & 90 sq ft units available from £75 pcm

For enquiries or advice please contact

Charlie Holgate

01342 885 255

07968 237 702

contact@carewellcontainers.co.uk
www.carewellcontainers.co.uk

H2o Plumbing

General Plumbing Services,
alterations & bathroom
installations.

No job too small
C & G trained

Call Richard on

01883 712523 or

07876 450420

SIMMONS DOMESTIC

Repairs—Spares—Servicing

Washing machines, washer dryers,
Tumble dryers, Dishwashers,
Vacuum cleaners, Electric cookers

Bosch washing machine specialist

Established 1978

NO CALL OUT CHARGE

Reliable Engineers, Low Labour Cost

GUARANTEES AVAILABLE



01342 834167

07976 981909

ALEX JONES FUNERAL DIRECTORS

Serving the community since 1996

- OFFERING A CARING AND PERSONAL SERVICE
 - BEAUTIFUL CHAPELS OF REST
 - HOME VISITS AVAILABLE
 - MEMORIAL MASONRY
 - PRE-PAID FUNERAL PLANS
- AN INDEPENDENT FAMILY OWNED BUSINESS

LINGFIELD

1 East Grinstead
Surrey
RH7 6EP
Tel: 01342 832 534

OXTED

92 Station Road East
Surrey
RH8 0QA
Tel: 01883 730 383

FOREST ROW

1 Ashdown Court
Lewes Road
East Sussex
RH18 5EZ
Tel: 01342 822 399

EDENBRIDGE

70 High Street
Kent
TN8 5AS
Tel: 01732 860 047



Golden Charter 
Smart Planning for Later Life



Alex Jones Funeral Directors Limited is an appointed representative of Golden Charter Limited trading as Golden Charter Funeral Plans which is authorised and regulated by the Financial Conduct Authority (FRN:965279).



WATT ARE YOU WAITING FOR?

BCM Electrical is a **professional electrical company** who undertake all aspects of electrical work.

- ⚡ Fault finding
- ⚡ Full/partial rewires
- ⚡ EICR/EIC testing and certification
- ⚡ LED lighting and design
- ⚡ Additions and alterations
- ⚡ CCTV
- ⚡ Data
- ⚡ Kitchen/Bathroom wiring
- ⚡ All smart systems including HIVE heating and RING doorbells/CCTV

FULLY INSURED • FULLY QUALIFIED

📞 **07456 411636**

✉ Email: bcmelectricaluk@gmail.com

🌐 Website: www.bcmelectricaluk.co.uk



Puppy & Dog Training!

6 week training & socialisation courses in Lingfield & Hartfield

For pups under 20 weeks, family friendly, run by accredited dog trainer!

Private 1:1 training for all ages

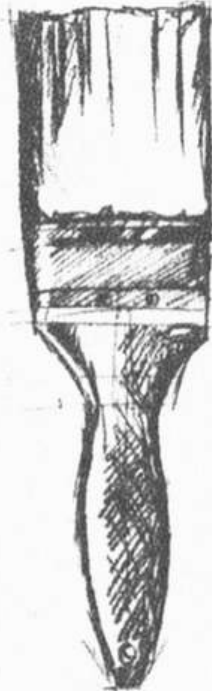


SCAN ME!

07387553234

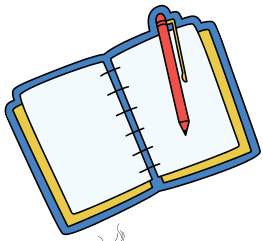
SARAH@MYCOMPLEXCANINE.CO.UK
[INSTAGRAM.COM/MYCOMPLEXCANINE/](https://www.instagram.com/mycomplexcanine/)
[FACEBOOK.COM/MYCOMPLEXCANINE](https://www.facebook.com/mycomplexcanine)

Peter England Decorating Ltd



- Domestic and Commercial
- Fully insured
- References available
- Free estimates and advice
- All aspects of work undertaken

01342 457 321 • 07743 912 557
peterenglanddecorating@live.com



More dates for your diaries & don't forgets!



Every
Tuesday

Pop-in & chat at the SS Peter & Paul, Lingfield. 10-noon.



Every
Tuesday

Lingfield table Tennis Social Club
Victoria Club, Lingfield. 7-6.30pm.



Every
Thursday

For youngsters years 6-11. 3.30-5.30pm (term time)
Dormansland Memorial Hall.



1st Tuesday
of month

SEND peer support group for parents & carers.
Dormansland baptist church. 10-11.30am.



1st Saturday
of month

Breakfast Hub at SS Peter & Paul church, Lingfield.
Bacon rolls etc. 9-10.30am.



2nd Saturday
of month
10am-1.30pm

Repair Cafe East Grinstead. At Glen Vue Community
Hub In Station Road. breathing life back into broken
items and gadgets



3rd Saturday
of month
10am-1.30pm

Repair Cafe Forest Row. At the Community Centre In
Hartfield Road. breathing life back into broken items and
gadgets



3rd Wed.
of month
1.30-3pm

Support group for parents/carers for those with epilepsy
and/or learning difficulties.
St Peter & St Paul's church, Lingfield.



Last Sat
of month
from 12.30pm

A free, simple lunch is offered at St Bernard's
church, Lingfield



Last Tues
of month
from 7.30pm

Wine & Wondering! Spiritual **not** religious!
The Star, Lingfield.



Last Thurs
of month

Age UK Surrey Tea & Chat. 2.30 - 4pm
Jennings Hall, Lingfield & Dormansland Comm. Centre.
Anyone over 50 is welcome



Sunday
14th June.

During the 10am service at St John's. We look forward
to seeing you! 2nd Sunday of each month.



Last Sunday
of month

Men's Walks. 10am meet at
Viewpoint Centre in Moons Lane.



Letter to the Editor

Dear Village Voice

I am writing as a resident of Lingfield to congratulate whoever is responsible for the flowers, trees and other decorations along Dormans High Street. It no doubt requires a lot of work and commitment but it is worthwhile as it a pleasure to see the displays. Well done.

Ian Jones
Lingfield

From the Editor

Thank you for everyone's contribution & I hope you are all coping with the football overload at the moment. Not a problem in my house!



Copy date for the **September** edition is **Tuesday 18th August**. I look forward to hearing from you about upcoming events during the summer or anything you think may be of interest to your fellow residents.

Annie Robinson (Ed)

editor@dormanslandvillagevoice.co.uk

The views, opinions and updates published in this magazine are those of the content authors and do not necessarily reflect or represent the views and opinions held by the Village Voice. We do our best to check facts wherever possible.

Please Support The Village Voice

If you are able and would like to support the cost of bringing this magazine to your door and ensuring we all stay connected, please scan this QR code to make a donation. Alternately, [email the editor](mailto:editor@dormanslandvillagevoice.co.uk), or call St John's Treasurer, John for details of other ways to contribute, thanks.



Inspiring Exciting Futures

Lingfield College is a vibrant and successful independent day school for children from 6 months - 18 years. Set amidst the beautiful Surrey countryside on the Kent and Sussex borders, just 30 miles from London, it is an inspiring place to learn.

We offer a unique blend of academic excellence, supportive pastoral care and rich co-curricular opportunities that help prepare them for exciting futures.

Prep School In Action: Fri 18 Sep

Senior School Open Morning: Sat 26 Sep

Sixth Form Information Evening: Thurs 8 Oct

THE
GOOD
SCHOOLS
GUIDE


"All talents are celebrated and opportunities across subject areas mean everybody finds their thing."

Good Schools Guide 2025-26

For further information, to book a space on an open event, or to arrange a **personal tour**, visit our website.



Dormansland Village Activities and useful numbers

Action Research, Dormansland Committee	Vicky Bown	01732 863950
CARE in East Grinstead and Lingfield (transport to medical appointments is provided by volunteers for those without other means of transport - book between 9:00 am and 2:00 pm)		01342 410086
Carnival Committee College of St Barnabas	dormanslandcarnival@gmail.com Chaplain www.st-barnabas.org.uk	01342 870260
Cricket Club	David Tribe hypernibe@gmail.com	07854 696779
Crimestoppers		0800 555 111
Dormans Evening WI	Karil Greenhalgh www.dewi.chessch.co.uk	01342 832038
Dormansland Baby & Toddler Group	www.tinyurl.com/4wxf6d99	
Dormansland Diamonds  @dormansland diamonds 2020	Lisa Felton Clive Robinson Alison Hills	07710 917427 07432 140892 07846 523226
Dormansland Parish Council Clerk www.dormansland.org.uk	parishclerk@dormansland.org.uk PO Box 335. Lingfield Delivery Office. Gun Pit Rd. Lingfield.RH7 6AR	07395 323456
Dormansland Rockets FC	Russel Foreman	07784 472217
Dormansland Primary School www.dormansland.surrey.sch.uk	Mrs Faye Davies and Mr Mark Cook Acting Head Teachers	01342 832359
Dormansland War Memorial Hall Bookings	Adrienne dwmhtrustees@gmail.com	
Horticultural Society	Tina Boyce	01342 833655
Hospitals: East Surrey Crawley Caterham Dene Queen Victoria		01737 768511 01293 600300 01883 837512 01342 414000
Lingfield & Dormansland Community Centre Lingfield Silver Band Lingfield Surgery	Terri Pagram, Manager Julie Fuller	01342 833893 01342 833400 01342 836327
Meals on Wheels MP for East Surrey www.clairecouthinho.com	Sara Watson & Sally Knight Claire Coutinho claire.couthinho.mp@parliament.uk	07504 481289 0207 219 5972
Neighbourhood Watch/COMNET	Geoff Ledden	01342 836775
Parish Room Bookings Police (Surrey)	Anne van Vliet	01342 833183 101

Penny's Place Cafe St John's Centenary Room in The Platt	Nicole Chamberland nchamberland75@gmail.com	
Riding for the Disabled	Pim Ball	01342 870426
Sewing Classes	Cynthia Jones mysewinglessons@gmail.com	07929 878563
South-East Water Emergency Number (24/7)		0333 000 0365
Tanzen Academy (Dance Lessons)	kathy@tanzenacademy.uk	07894 116254
Tennis Club	David Coward www.dormanslandtennisclub.co.uk	07738 195669
Urban Saints (Baptist Church)	David Jackson dbcurbansaints@gmail.com	01342 314738
Little Chums Pre School & Forest School	Julie Duggan www.littlechums.com	07849 308762
YWI Dormansland	Adrienne Brady www.ywidormansland.org.uk infoywidormansland@surreyfedwi.org.uk	07879 497378

Churchwardens at St John's

Mr Ray Daines Gatewood, Blackberry Road, Felcourt, RH19 2GH		01342 870358
Helen Lee 32 Dorset Gardens, East Grinstead. RH19 2SD		07876 352245
Parish Treasurer & Envelope Scheme Recorder 11 Pine Way Close, East Grinstead, RH19 4JR	John Pordum pordum@gmail	07711 487178
Messy Church		07774 437471
Child Protection and Safety Officers	Mrs Rosemary Williams Mrs Susan Calamassi	01342 834225 01342 833703
Parish Room Bookings	Mrs Anne van Vliet	07941 135012
Church Flowers	Mrs Josien Yates	01342 832159
Village Voice Editor	Anne Robinson editor@dormanslandvillagevoice.co.uk	07798 823115
Advertising Manager 96 West St, Dormansland, RH7 6QT	Mrs Roz Daly roz.daly2@btinternet.com	07732 711055
Printers: En-route	www.en-route.co.uk	01342 894900
Front cover photograph	Annie Robinson	



To the army of volunteers that make the production & distribution of this magazine possible

Worship at St. John's

www.stjohnsdormansland.org

Sundays

Said Communion (every week) 8.00am
Bubble Church for little ones on 1st Sunday. Arrive from 8.45am. 9.00am
Family Communion on 2nd Sunday, Parish Communion all other
Sundays. Sunday Smilers (children 4-11) meets on 3rd Sunday. 10.00am
Informal Service every Sunday. 5.00pm

Weekdays

Messy Church (last Tuesday of month) 3.30pm
Wednesday - Service of Compline on Zoom 8.00pm
Friday - Prayer Time. St Andrew's chapel. 4.00pm

Vicar of Lingfield and Dormansland

The Reverend Ian Whitley 07961 382293

Associate Vicar

The Reverend Annie Kurk 07774 437471
St John's Vicarage, The Platt, Dormansland, RH7 6QU
email: vicar.dormansland@gmail.com

Benefice administrator - officelingfieldppchurch@gmail.com 01342 832021

Centenary Room Bookings - Benefice Office 01342 832021

Dormansland Baptist Church

www.dormanslandbaptistchurch.org.uk

Sunday Morning Service 10.30am

Minister

Rev. Jacqueline Parson dbcminster@gmail.com
07551 493418

St Bernard's Catholic Church, Lingfield

Sunday Morning Service 9.00am

Father Jack Lusted 01342 325705

Claridge House Quaker Meeting

www.claridgehouse.org.uk

Sunday Morning Meeting for Worship 9.45am

Please contact Tony Franklin (barandtony@aol.com) or Lesley
Evans (lesleybcevens@gmail.com) if you'd like to attend.

Resident Friend 01342 832150

BUBBL CHURCH

Church service for little ones,
1st Sunday of every month,
8.45 for 9am start

5th July, 2nd August,
6th Sept

in the Centenary Room, St John's church



Tanzen Academy

Principal Kathy Mackie-Clark L.I.S.T.D. Adv.
CDE (Council of Dance Education Qualification)
Branches in Ardingly and Dormansland



Fun Friends Learning

CLASSES AVAILABLE

- ☆ ISTD Ballet, Tap & Modern
- ☆ Special Pre-School Class
- ☆ Musical Theatre & Drama
 - ☆ Street Jazz
- ☆ Private Singing Lessons
- ☆ Adult Ballet & Tap
- ☆ ISTD & LAMDA Exams
 - ☆ Contemporary
- ☆ Strengthening & Conditioning

All ages & abilities welcome, children taken from 2½

For more information or to register
call Kathy on 07894 116254 or email
kathy@tanzenacademy.uk

Tanzen Academy is fully insured and all our teachers are DBS
checked and first aid trained



TANZEN ACADEMY SUMMER WORKSHOPS

KPOP DEMON HUNTERS

Thursday 6th August 2026
Parish Rooms, Dormansland
9.30am to 12.30pm



Matilda

Wednesday 12th August 2026
Church Centre, Ardingly
9.30am to 12.30pm

Come and join us for singing, dancing, crafts and more
All welcome, no need to be an existing Tanzen pupil - we hope
you can join us!

£22.50 per person per workshop
contact kathy@tanzenacademy.uk for more information



35 years

as your independent
local estate agent



01342 837783
lingfield@robertleech.com

Robert
Leech.



EST 1989


LINGSTEAD
CONSTRUCTION LTD
01342 459936

www.lingsteadconstruction.co.uk

Home Extensions, Loft & Garage Conversions.
General Building & Maintenance.
Foundations and Groundworks .
Kitchen Alterations and installation.
Driveway construction.

106 West Street, Dormansland, Surrey, RH7 6QT

